



**PROFESSIONAL DRIVERS**



**PRODUCT CATALOG**

**Amateur • Citizenband  
• Hi-Frequency •  
• Custom Designed Products •**

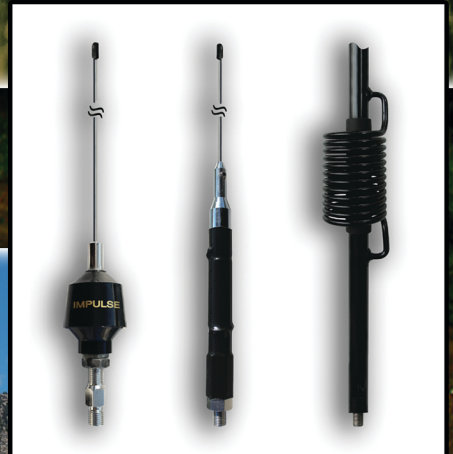
**FARMING NEEDS**



**OFF ROAD VEHICLES**



**RECREATIONAL VEHICLES**



**2019**

# TERMS AND CONDITIONS

## **BACK ORDERS**

ProComm strives to ship all orders as soon as possible. Any back orders totaling less than \$200.00 will be cancelled. If back order is caused by vendor material shortage, the back order will be cancelled and you will be notified.

## **DELIVERY**

Our normal shipping time is within 21 days after we receive your order (holidays and weekends excluded). Sometimes, however, material shortages or specially assembled or custom products can cause unscheduled delays.

## **FREIGHT POLICY**

All orders are shipped FOB Onarga, Illinois. Freight will be charged on all invoices. If order is \$2000.00 or more and paid within terms, freight may be deducted.

## **RETURNS**

No returns will be accepted without a return authorization number. Returned items must be shipped to us freight prepaid. All non-defective products will be returned to customer, or customer will be charged a 25% restocking fee.

## **PAYMENT TERMS**

Credit terms— net 30 days from shipment date— are available to approved accounts. Call us to request a credit application. We also accept Visa, MasterCard, or C.O.D.

## **PRICE CHANGES**

Prices and specifications are subject to change without notice. ProComm reserves the right to correct typographical errors on all price sheets, sales flyers, and catalog sheets. All prices are stated in United States currency.

## **MINIMUM ORDER**

Orders will be accepted for minimum of \$300.00 only.

## **WARRANTY**

All ProComm products are warranted against defective workmanship and material if failure results from these factors with one (1) year of purchase. ProComm does not assume any liabilities for any incidental or consequential damages of any kind, and our liability shall not exceed the original price of that product. Warranty does not cover misuse or abuse of any product.

# Table of Contents

CITIZENBAND (CB) - FIBERGLASS ANTENNAS	2
CITIZENBAND (CB) - BASE LOAD ANTENNAS & KITS	5
CITIZENBAND (CB) - CENTER LOAD ANTENNAS	7
CITIZENBAND (CB) - MAGNET MOUNT ANTENNA KITS	8
CITIZENBAND (CB) - GLASS MOUNT ANTENNAS	9
STAINLESS STEEL WHIPS	10
AM/FM ANTENNAS	11
SCANNER ANTENNAS	12
MOBILE TV ANTENNAS	13
CB & AMATEUR 10 METER - BASE STATION ANTENNAS	14
AMATEUR RADIO ANTENNAS	15
AMATEUR RADIO ANTENNA MOUNTS	17
OPTIMIZED OEM REPLACEMENT ANTENNAS	20
UNIVERSAL OEM ANTENNA SYSTEMS	22
OEM REPLACEMENT PARTS	23
M213™ CABLE & CONNECTORS	25
COAXIAL CABLE ASSEMBLIES	26
PRO SERIES BULK COAXIAL CABLE	31
ANTENNA STUDS	32
ALUMINUM ANTENNA MOUNTS	33
ANTENNA MOUNTS	36
ANTENNA MOUNT ACCESSORIES	38
STAINLESS STEEL ACCESSORIES	39
MICROPHONES & SPEAKERS	43
RADIO ACCESSORIES	44
CONNECTORS & ADAPTERS	46

# CITIZENBAND (CB) - FIBERGLASS ANTENNAS



## BULLDOG STANDARD FIBERGLASS ANTENNAS WITH WEATHER BAND

750 Watt rated • 5/16" Durable fiberglass whip • Top Loaded ¼ wave helically wound antenna • Covers weather band and NOAA alert • 20 Gauge copper wire • Chrome plated 3/8-24 ferrule • Factory tuned and field adjustable • Available in black (B), white (W) or red (R) • Kits Include: 3-Way aluminum mirror mount(s) with SO-239 stud & 9' Low loss RG-58 or RG-59 coax with molded PL259 connectors



Part No.	Length	Single Kit No.	Dual Kit No.
JBC200	2 FT	HSS995-2	HSD995-2
JBC300	3 FT	HSS995-3	HSD995-3
JBC400	4 FT	HSS995-4	HSD995-4
JBC500	5 FT	HSS995-5	HSD995-5



## ORIGINAL FLEX FIBERGLASS ANTENNAS

500 Watt rated • 1/4" Flexible fiberglass whip • Top Loaded ¼ wave helically wound antenna • 22 Gauge copper wire • Chrome plated 3/8-24 ferrule • Factory tuned and field adjustable • Available in black (B), white (W) or red (R) • Kits Include: 3-Way aluminum mirror mount(s) with SO-239 stud & 9' Low loss RG-58 or RG-59 coax with molded PL259 connectors



Part No.	Length	Single Kit No.	Dual Kit No.
JBCF200	2 FT	HSS995-F2	HSD995-F2
JBCF300	3 FT	HSS995-F3	HSD995-F3
JBCF400	4 FT	HSS995-F4	HSD995-F4



## BIG DOG HEAVY DUTY FIBERGLASS ANTENNAS WITH WEATHER BAND

1000 Watt rated • Heavy duty 3/8" fiberglass whip • Top Loaded ¼ wave helically wound antenna • Covers weather band and NOAA alert • 18 Gauge copper wire • Chrome plated 3/8-24 ferrule • Factory tuned and field adjustable • Available in black (B), white (W) or red (R)



Part No.	Length	Single Kit No.	Dual Kit No.
JBC200-1	2 FT	N/A	N/A
JBC300-1	3 FT	N/A	N/A
JBC400-1	4 FT	N/A	N/A
JBC500-1	5 FT	N/A	N/A
JBC600-1	6 FT	N/A	N/A



## SUPER FLEX FIBERGLASS ANTENNAS

300 Watt rated • 3/16" Flexible fiberglass whip • Top Loaded ¼ wave helically wound antenna • 25 Gauge copper wire • Chrome plated 3/8-24 ferrule • Factory tuned and field adjustable • Available in black (B), white (W) or red (R)



Part No.	Length	Single Kit No.	Dual Kit No.
SF2	2 FT	N/A	N/A
SF3	3 FT	N/A	N/A
SF4	4 FT	N/A	N/A

# CITIZENBAND (CB) - FIBERGLASS ANTENNAS

## TRI-MAX HEAVY DUTY FIBERGLASS ANTENNAS WITH RADIAL GROUND



1200 Watt rated • 3 Arm radial ground built into ferrule for broadband performance • Heavy duty 3/8" fiberglass whip • Top Loaded 1/4 wave helically wound antenna • 16 Gauge copper wire • Chrome plated ferrule with 3/8-24 Stainless steel mounting screw • Factory tuned and field adjustable • Available in black (B), white (W) or red (R)

Part No.	Length	Single Kit No.	Dual Kit No.
TM3	3 FT	N/A	N/A
TM4	4 FT	N/A	N/A

## FR SERIES INTERNAL HELICAL WOUND FIBERGLASS ANTENNAS



300 Watt rated • Internal helically wound antenna • Contains dual linear loaded copper wire conductors • 5/16" Durable fiberglass whip with chrome plated 3/8-24 ferrule • Factory tuned for low SWR • Available in 3, 4 or 8 foot lengths • Colors - black (B) or white (W)

Part No.	Length	Single Kit No.	Dual Kit No.
FR30	30 INCH	HSS995-FR30	HSD995-FR30
FR3	3 FT	HSS995-FR3	HSD995-FR3
FR4	4 FT	HSS995-FR4	HSD995-FR4
FR96	92 IN	N/A	N/A

## WEATHER WATCH STANDARD FIBERGLASS ANTENNAS



750 Watt rated • 5/16" Durable fiberglass whip • Top Loaded 1/4 wave helically wound antenna with weather trap • 20 Gauge copper wire • Chrome plated 3/8-24 ferrule • Factory tuned and field adjustable • Available in black (B), white (W) or red (R) • Kits Include: 3-Way aluminum mirror mount(s) with SO-239 stud & 9' Low loss RG-58 or RG-59 coax with molded PL259 connectors

Part No.	Length	Single Kit No.	Dual Kit No.
JBCW200	2 FT	N/A	N/A
JBCW300	3 FT	HSS995-W3	HSD995-W3
JBCW400	4 FT	HSS995-W4	HSD995-W4

## TUNABLE FLEX FIBERGLASS ANTENNAS



500 Watt rated • 1/4" Flexible fiberglass whip • Stainless steel tuning tip • Top Loaded 1/4 wave helically wound antenna with weather trap • 22 Gauge copper wire • Chrome plated 3/8-24 ferrule • Factory tuned and field adjustable • Available in black (B), white (W) or red (R)

Part No.	Length	Single Kit No.	Dual Kit No.
KF2	2 FT	N/A	N/A
KF3	3 FT	N/A	N/A
KF4	4 FT	N/A	N/A

# CITIZENBAND (CB) - FIBERGLASS ANTENNAS



## EZ-TUNE HEAVY DUTY FIBERGLASS ANTENNAS WITH WEATHER BAND

EZ-Tune Tip allows you tune your antenna without tools • Stainless steel threaded tuning tip and nut • 3/8" Premium fiberglass core • 19 Gauge insulated copper wire • 3/8-24 Stainless steel mounting stud • Frequency range 26 – 28 MHz • Receives weather bands and NOAA alerts • Available in black (B), white (W) or red (R)



Part No.	Length	Single Kit No.	Dual Kit No.
BTF2	2 FT	N/A	N/A
BTF3	3 FT	N/A	N/A
BTF4	4 FT	N/A	N/A
BTF5	5 FT	N/A	N/A



## QUAD-ROD TUNABLE HEAVY DUTY FIBERGLASS ANTENNAS

1500 Watt rated • 4-1/2' Heavy-duty 3/8" fiberglass whip • Unique 4 - 22 gauge wire wound design for ultra broadband performance • 4" - .125 Diameter 17-7 stainless steel tuning tip with corona discharge cap • Heavy duty chrome plated 3/8-24 ferrule • Clear anti-static PVC jacket • Factory tuned and field adjustable • Available in black/gold only



Part No.	Length	Single Kit No.	Dual Kit No.
QW45BG	4.5 FT	N/A	N/A



## TUNABLE BIG DOG HEAVY DUTY FIBERGLASS ANTENNAS

1000 Watt rated • Heavy-duty 3/8" fiberglass whip • .125 Diameter 17-7 stainless steel tuning tip • Top Loaded 1/4 wave helically wound antenna • 18 Gauge copper wire • Chrome plated 3/8-24 ferrule • Factory tuned and field adjustable • Available in black (B), white (W) or red (R)



Part No.	Length	Single Kit No.	Dual Kit No.
T200-1	2 FT	N/A	N/A
T300-1	3 FT	N/A	N/A
T400-1	4 FT	N/A	N/A
T500-1	5 FT	N/A	N/A



## DINGO NO-GROUND FIBERGLASS ANTENNA KITS

MIRROR MOUNT - 300 Watt rated • 5/16" Durable fiberglass tunable tip antenna • Stainless steel mirror mount WINDOW CLIP - 300 Watt rated • 24" Mini base load antenna • Aluminum window clip mount • Patented chrome dome cable connection • 17' RG58 coax with molded PL259 connector • Available in black (BK), white (W) or red (R)



Part No.	Length	Single Kit No.	Dual Kit No.
CB-NG3	3 FT	MIRROR MOUNT	N/A
CB-NG4	4 FT	MIRROR MOUNT	N/A
CB-NGWC17	2 FT	WINDOW CLIP	N/A

# CITIZENBAND (CB) - BASE LOAD ANTENNAS & KITS

## HALF-N-HALF SERIES ANTENNAS

1000 Watt rated • 5/16" Durable fiberglass base • 18 Gauge copper wire • 17-7 .100 Diameter stainless steel whip • Chrome plated 3/8-24 threaded base • Factory tuned and field adjustable by adjusting whip • Available in black or white (W)



Part No.	Length
JBC1300	36 IN
JBC1400	48 IN
JBC1500	54 IN



## MONSTER BASE LOAD ANTENNAS

1500 Watt rated • Massive 1/2" diameter fiberglass base • High power 14 gauge copper wire • 17-7 .125 Diameter stainless steel whip • Oversized chrome plated ferrules • 3/8-24 Stainless steel mounting screw • Factory tuned and field adjustable by adjusting whip • Available in black only



Part No.	Length
MBL3B	36 IN
MBL4B	48 IN



## IMPULSE ANTENNAS

350 Watt rated • Innovative TWIST-TO-TUNE COIL antenna • 17-7 Stainless steel whip • Fits standards 3/8-24 thread mounts • Factory tuned and field adjustable • Available in black only



Part No.	Length
IMP1800	18 IN
IMP3000	30 IN
IMP4000	40 IN



## IMPULSE MAG MOUNT KIT

350 Watt rated • Impulse tunable base load CB antenna • 3" Heavy duty chrome plated magnet mount • 12' High quality low loss RG58 coax with molded PL259 connector • Factory tuned and field adjustable • Available in black only



Part No.	Length
IMP3000M	30 IN
IMP4000M	40 IN

# CITIZENBAND (CB) - BASE LOAD ANTENNAS & KITS

## KWIK TUNE ANTENNAS

25 Watt rated • Ring tunable base loaded CB antenna pretuned to 27 MHz • Unique high performance design for low SWR • Field tunable - No cutting needed • Adjust rings for superior performance • Chrome plated 3/8-24 threaded base



Part No.	Length
JBC800	8 IN
JBC2400	24 IN
JBC3600	36 IN
JBC4800	48 IN

## KWIK TUNE MAG MOUNT KIT

25 Watt rated • Kwik Tune CB antenna pretuned to 27 MHz • 3" Heavy duty chrome plated magnet mount • 12' High quality low loss RG58 coax with molded PL259 connector • Factory tuned and field adjustable



Part No.	Length
JBC112-8	8 IN
JBC112-2400	24 IN
JBC112-3600	36 IN
JBC112-4800	48 IN

## KWIK TUNE TRUNK MOUNT KIT

25 Watt rated • Kwik Tune CB antenna pretuned to 27 MHz • Heavy duty trunk lip mount • 15' High quality low loss RG58 coax with molded PL259 connector • Factory tuned and field adjustable



Part No.	Length
JBC105-36	36 IN
JBC105-48	48 IN

## HELICAL BASE LOAD ANTENNAS

4000 Watt rated • High-tech helical coil design • Wide CB band coverage • 17-7 .100 Diameter stainless steel whip • Chrome plated ferrule and mast • 3/8-24 Stainless steel mounting screw • Field adjustable by adjusting whip • Available in black only



Part No.	Length
HBL4000	56 IN

# CITIZENBAND (CB) - CENTER LOAD ANTENNAS



## OPEN COIL CENTER LOAD ANTENNA

4000 Watt rated • High-tech helical coil design • 12" Stainless steel shaft • Wide CB band coverage • 17-7 .100 Diameter stainless steel whip • Chrome plated ferrule and mast • 3/8-24 Stainless steel mounting screw • Field adjustable by adjusting whip • Available in black only

Part No.	Color	Length
HBL4120	CHROME W/BLACK CENTER	68 IN



## INTRUDER - ALUMALITE HIGH PERFORMANCE ANTENNA

10,000 Watt rated • Lightweight aircraft aluminum design • 3" Outside diameter coil • Durable oversize stainless steel whip – 48" .200 diameter • Ultra broad band performance • Field Tunable • 5'6" Overall height • Available in platinum color finish

Part No.	Color	Length
MM490	PLATINUM	66 IN



## CHIMP - ALUMALITE HIGH PERFORMANCE ANTENNA

5,000 Watt rated • Lightweight aircraft aluminum design • Durable oversize stainless steel whip – 36" .125 diameter • Ultra broad band performance • Field Tunable • 4' Overall height • Available in black anodized or platinum color finish

Part No.	Color	Length
CH58	PLATINUM	48 IN
CH58B	BLACK	48 IN

# CITIZENBAND (CB) - MAGNET MOUNT ANTENNA KITS

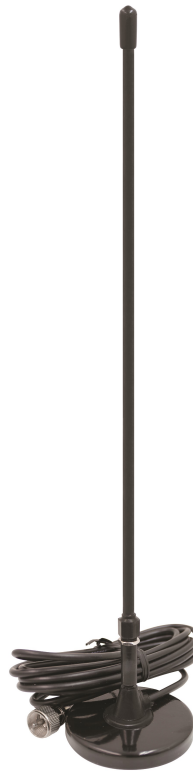
## 101 - FLEXIBLE CB ANTENNA MAGNET MOUNT



25 Watt rated • 9" Super flexible CB antenna • Powerful 3" magnet with protective base • 12' High quality RG58 coax with PL259 connector • Weatherproof encapsulated connections • Available in black only

Part No.	Option	Length
JBC101		12 IN

## 270 - FIBERGLASS WHIP MAGNET MOUNT



75 Watt rated • 15" Low profile fiberglass CB antenna • Base tunable with tuning sleeve • Powerful 3" magnet • 12' High quality RG58 coax with PL259 connector

Part No.	Option	Length
CB270		15 IN

## 150 - RUBBER DUCK MAGNET MOUNT



25 Watt rated • Virtually unbreakable conductive rubber CB antenna • Flexible and tough - great for high stress areas • 14-1/2" total height • Easy tuning with base tuning ring design • Fits standards 3/8-24 thread mounts • Kit includes 3" heavy duty chrome magnet mount with 12' RG58 coax and molded PL259 connector



Part No.	Option	Length
JBC150M	MAGNET KIT	
JBC150	ANTENNA ONLY	

## PC36 - STAINLESS STEEL WHIP MAGNET MOUNT



300 Watt rated • Base loaded digitally wound 18 gauge coil • Powerful 3" black powder coated magnet mount • 36" 17-7 Stainless steel whip • 15' low loss RG58 coax with PL259 connector • Factory tuned and adjustable



Part No.	Option	Length
PC36	STANDARD	
PC36S	WITH SPRING	

# CITIZENBAND (CB) - GLASS MOUNT ANTENNAS

## STANDARD ON-GLASS ANTENNA

25 Watt rated • Proprietary torroidal transmission line transformer design • 24" Powder coated removable stainless steel whip • Low SWR (2.0 or less) • 14' RG58U low loss coax with 95% braid and PL259 connector • Frequency range: 26.965 - 27.405 MHz



MADE IN  
  
U. S. A.  
WITH GLOBAL COMPONENTS

Part No.	Option	Length
CBG22	COMPLETE KIT	24 IN
CBG-MF	MAST AND FOOT	
RMT-KT	REMOUNT KIT	

## VECTOR - HIGH PERFORMANCE ON-GLASS ANTENNA

50 Watt rated • Coupler box utilizing transmission line transformer design • Factory tuned 1/2 wave removable antenna element • Tuning collar makes fine tuning easier than ever • 16' RG58U low loss coax with crimped PL259 connector • Frequency range: 26.965 - 27.405 MHz



MADE IN  
  
U. S. A.  
WITH GLOBAL COMPONENTS

Part No.	Option	Length
V-CBGM	COMPLETE KIT	20 IN
VCB-MF	MAST AND FOOT	
RMT-KT	REMOUNT KIT	

# STAINLESS STEEL WHIPS



## .100 STAINLESS STEEL STINGERS

High quality USA made 17-7ph stainless steel rod • Length: 24" - 52" • Diameter - .100" • All stingers come with coronas • Custom lengths available

Part No.	Option	Length
30SST		30 IN
40SST		40 IN
42SST		42 IN
48SST		48 IN
52SST		52 IN



## .125 STAINLESS STEEL STINGERS

High quality USA made 17-7ph stainless steel rod • Length: 36 & 48" • Diameter - .125" • All stingers come with coronas • Custom lengths available

Part No.	Option	Length
36/125SST		36 IN
48/125SST		48 IN



## STINGER BASES

Chrome plated 3/8-24 threaded base • Inside diameter" .100 or .125

Part No.	Option	Length
CB52	.100	N/A
CB55	.125	N/A



## 102" STAINLESS STEEL ANTENNAS

High quality 17-7ph stainless steel rod • Overall length of 102" • Diameter is .200" base tapered to .100" tip • Tipped with plated corona • Minimum order - 36 pieces

Part No.	Option	Length
1020	SET SCREW	102 IN
1020C	CRIMPED	102 IN

# AM/FM ANTENNAS



## AM/FM ON-GLASS ANTENNA KIT

21" Overall height including adhesive mounting base • 17-7 Stainless steel antenna • 15' Coax cable with Motorola plug

Part No.	Option	Length
PC-GMFM		21 IN



## AM/FM HORIZONTAL MIRROR MOUNT KIT

31" Stainless steel antenna • Horizontal mirror mount with chrome plated SO239 • 9' RG62U coaxial cable with PL-259 TO Motorola plug

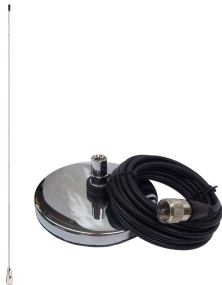
Part No.	Option	Length
JBC332-FM	SINGLE GROOVE	31 IN
JBC332H-FM	DOUBLE GROOVE (Pictured)	31 IN



## AM/FM MIRROR MOUNT KIT

31" Stainless steel antenna • Heavy duty slim line mirror mount with chrome plated SO239 • 9' RG62U coaxial cable with PL-259 TO Motorola plug

Part No.	Option	Length
JBC362H-FM	DOUBLE GROOVE (Pictured)	31 IN
SS-FM	31" STAINLESS STEEL WHIP	31 IN
108MM-PL	9' RG58U COAX WITH PL TO MOTO	31 IN



## AM/FM MAGNET MOUNT KIT

31" Stainless steel antenna • 3" Chrome plated magnet mount • 12' RG58AU coaxial cable with Motorola plug

Part No.	Option	Length
JBC112-FM		31 IN



## AM/FM FIBERGLASS ANTENNAS

24" 1/4-wave fiberglass AM/FM antenna • Contains single internal 18 gauge insulated wire • 5/16" Durable fiberglass whip with chrome plated 3/8-24 ferrule • Factory tuned

Part No.	Option	Length
AF24B	COLOR - BLACK (Pictured)	24 IN
AF24W	COLOR - WHITE	24 IN

# SCANNER ANTENNAS

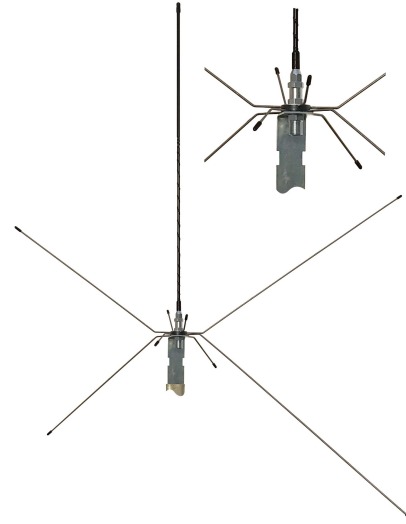
## DISGUISE GLASS MOUNT SCANNER ANTENNA KIT

Multiband receiving antenna - covers 30 - 1200 MHz • Cellular style look • 22" 17-7 Stainless steel whip • Includes 15' RG58/U coax with transmission box and BNC connector



Part No.	Option
PC-SGM/BN	BNC
SGM-RM	MAST ONLY
SGM-RMF	MAST AND FOOT
RMT-KT	REMOUNT KIT

## SPYDER MAXX BASE STATION SCANNER ANTENNAS



25 -1200 MHz - Ideal for all band scanners: low band, high band and UHF frequencies • 4 Sets of specific frequency stainless steel radials (21" – 2 Meter, 13.75" – 1.25 Meter, 5.25" – 70 cm, 3" – 33cm) • Copper wound fiberglass center element for low frequencies • Mounts on 1-1/4" to 2" mast pipe • Antenna connection: SO-239 • Available with 50' or 75' of low loss coax cable & BNC connectors

Part No.	Option
SP-800	ANTENNA ONLY
SP-800/50BN	50' COAX
SP-800/75BN	75' COAX
SP-800/250BN	50' PRO200 COAX

## MINI MOBILE SCANNER ANTENNAS

Wide banded scanner antenna - Freq: 25 MHz to 1.2 GHz • ProComm's exclusive hermetically sealed, waterproof molded circuit • Includes 12' RG174 low loss coax with BNC connector • Available with magnet, mirror or window mounts



Part No.	Option
JBC290M/BN	MAGNET MOUNT
JBC290MM/BN	MIRROR MOUNT
JBC290WC/BN	WINDOW CLIP

## TRI-BAND SCANNER ANTENNAS

Tri-banded scanner antenna • 30 - 512 MHz frequencies • Stainless steel whip with wound center load • 3/8-24 thread to fit most antennas mounts • Available with magnet or mirror mounts which include 12' low loss coax with BNC connector



Part No.	Option
PC360	ANTENNA ONLY
PC360MBN	MAGNET MOUNT
PC360MMBN	MIRROR MOUNT

## STAINLESS STEEL SCANNER ANTENNA AND KITS

High quality 18" stainless steel whip • Frequency range: 25 - 960 MHz • Standard 3/8-24 thread ferrule • Magnet mount kit includes 3" chrome magnet mount and 12' RG58 95% shielded coax with BNC (/BN) or Motorola plug (/M) • Mirror mount kit includes heavy duty aluminum mirror mount and 9' RG58 95% shielded coax with BNC (/BN) or Motorola plug (/M)



Part No.	Option
JBC180	ANTENNA ONLY
JBC180M3	MAGNET MOUNT
JBC180MM	MIRROR MOUNT
144MM-PL	MOTOROLA CABLE

# MOBILE TV ANTENNAS

## STEALTH - PATENTED TV ANTENNA KIT



Receives local HD and digital TV broadcasts • Supports VHF and UHF frequencies • Omni-directional long range reception • Delivers the best performance of any antenna in its class • 3/8-24 threaded antenna port built in for additional antenna • Kit includes 12' RG59 low loss cable, mirror mount, mounting hardware including SO239 and easy instructions • Available in black only

**HD**  
ready

Part No.	Option	Length
117	MIRROR MOUNT KIT	

## 3DTV OMNI DIRECTIONAL TV ANTENNA KIT



Receives local HD and digital TV broadcasts • Supports VHF and UHF frequencies • 3 - 16" Length 1/4" diameter fiberglass elements • Heavy duty aluminum antenna hub • Kit includes 9' RG59 low loss cable w/F-connection termination and 3-way deluxe aluminum mirror mount • Available in black (B), red (R) or white (W)

**HD**  
ready

Part No.	Option	Length
3D-MM	MIRROR MOUNT KIT	16 IN
3D-HUB	3 ELEMENT HUB W/SO239	
HS9PL-F	9' RG59 CABLE (PL TO F)	

## MTV 2000 MINIATURE PORTABLE TV ANTENNA KIT



Receives local HD and digital TV broadcasts • Supports VHF and UHF frequencies • ProComm's exclusive encapsulated VHF loading coil/UHF trap • Unique black ABS molded circuit for TV reception and 75 Ohm impedance • Kit includes 12' 75 Ohm low loss cable w/F-connection termination and black coated horizontal mirror mount • 14" Black powder coated stainless steel elements

**HD**  
ready

Part No.	Option	Length
MTV2-MM	MIRROR MOUNT KIT	14 IN
MTV2-M	MAG MOUNT KIT	14 IN

# CB & AMATEUR 10 METER - BASE STATION ANTENNAS

## PROTON BASE STATION ANTENNA

2000 Watt P.E.P. • Four section 18.5' Omni-directional 1/2 wave CB base station antenna • 10-12 Meter • Threaded rings offer precise tuning • Rugged 4-piece fiberglass construction with chrome plated ferrules • Mounting hardware included

Part No.	Length	Option	Case Qty
PT99	18.5 FT	CASE QUANTITY ONLY	6



## PATRIOT BASE STATION ANTENNA

2000 Watt P.E.P. • Two section 12' Omni-directional 1/2 wave CB base station antenna • Threaded rings offer precise tuning • Extremely easy to install and operate • Mounting hardware included

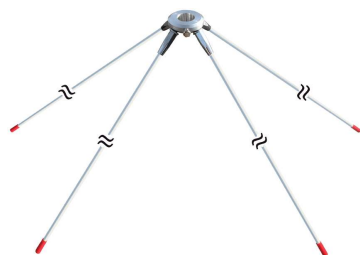
Part No.	Length	Option	Case Qty
PAT-12	12 FT	CASE QUANTITY ONLY	12



## UNIVERSAL GROUND PLANE KIT

Improves performance by 30% • Installs at the base of all ProComm base station antennas • Includes 4 - 6' long fiberglass radials with aluminum mounting hub

Part No.	Length	Option	Case Qty
PCGPK-1	6 FT	CASE QUANTITY ONLY	12

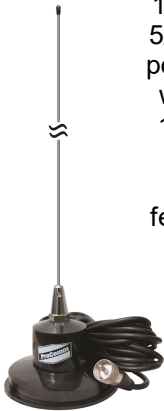


# AMATEUR RADIO ANTENNAS

## PRO/AM SERIES - 2 METER MAGNET MOUNT ANTENNA

144 - 174 MHz frequency range •  
5/8 Wave - 3.4dB gain • 500 Watt  
power rating • Powerful 3" magnet  
with durable ABS plastic cover •  
15' RG58 coax cable with PL259  
connector • 48" Stainless steel  
whip • Extended tuning range  
ferrule • Tuning cut chart provided

Part No.	Option	Frequency	Bandwidth
PC-2M58		144 - 174 MHz	



MADE IN  
U. S. A.  
PRO COMM CORPORATION

## PRO/AM SERIES - HF FIBERGLASS ANTENNAS

Power rated at 500 watt P.E.P. •  
Bottom section: 3/8" Heavy duty  
fiberglass rod, 18 Gauge copper  
wire, Standard 3/8-24 thread  
ferrule • Top section: .125" 17-7  
Stainless steel whip (adjustable) •  
Available in black (B), white (W) or  
red ( R )

Part No.	Option	Frequency	Bandwidth
PCF6		6 METER	1000 KHz
PCF10		10 METER	550 KHz
PCF12		12 METER	300 KHz
PCF15		15 METER	210 KHz
PCF17		17 METER	175 KHz
PCF20		20 METER	150 KHz
PCF30		30 METER	100 KHz
PCF40		40 METER	75 KHz
PCF60		60 METER	45 KHz
PCF75		75 METER	40 KHz
PCF80		80 METER	36 KHz
PCF-5KT	5 PACK	10,15,20,40,75	



MADE IN  
U. S. A.  
PRO COMM CORPORATION

## PRO/AM SERIES - MINI HF FIBERGLASS ANTENNAS

Power rated at 350 watt P.E.P. •  
Bottom section: 3/8" Heavy duty  
fiberglass rod, 22 Gauge copper  
wire, Standard 3/8-24 thread  
ferrule • Top section: .125" 17-7  
Stainless steel tip (adjustable) •  
Black color standard but also  
available in white (W) or red ( R )

Part No.	Option	Frequency	Bandwidth
CS6M		6 METER	800 KHz
CS10M		10 METER	175 KHz
CS12M		12 METER	140 KHz
CS15M		15 METER	110 KHz
CS17M		17 METER	95 KHz
CS20M		20 METER	80 KHz
CS30M		30 METER	100 KHz
CS40M		40 METER	40 KHz
CS60M		60 METER	38 KHz
CS75M		75 METER	36 KHz
CS80M		80 METER	32 KHz
CS-5KT	5 PACK	10,15,20,40,75	



MADE IN  
U. S. A.  
PRO COMM CORPORATION

# AMATEUR RADIO ANTENNAS

## PRO/AM SERIES - 2 METER MAGNET MOUNT KITS



20" x .100" diameter 17-7 Stainless steel whip • Chrome plated 3/8-24 threaded base • 3" Chrome magnet mount • 12' RG58 Cable with PL259 or BNC connector • Combo kit includes 2 antennas for flexibility SS-FM20 (2MTR) & PC144 (144-149 MHz)

Part No.	Option	Frequency	Bandwidth
SS-FM20	ANTENNA ONLY		
CD144M	PL259		
CD144M/BN	BNC		
PC144M	COMBO KIT (Pictured)		
PC144M/BN	COMBO KIT		

MADE IN  
U. S. A.  
www.procomm.com

## PRO/AM SERIES - QUARTER WAVE ANTENNAS



Durable 17-7 .100 diameter stainless steel element • Black ABS plastic housing • NMO Style mounting • Stainless steel contact spring • Soldered gold contact plate

Part No.	Option	Frequency	Bandwidth
PC-Q1		VHF-UHF	118-960
PCV-136		VHF	136-144
PCV-144		VHF	144-152
PCV-152		VHF	152-162
PCV-162		VHF	162-174
PCV-220		VHF	220-225
PCU-406		UHF	406-420
PCU-420		UHF	420-435
PCU-435		UHF	435-450
PCU-450		UHF	450-470
PCU-470		UHF	470-490
PCU-490		UHF	490-512
PCU-800		UHF	800-806

MADE IN  
U. S. A.  
www.procomm.com

# AMATEUR RADIO ANTENNA MOUNTS

## PRO TRI MAGNET MOUNT



Maxi Triple Magnet Mount • 3 - 4" Magnets on a 1/4" thick aluminum triangular plate • Heavy duty chrome plated stud with 3/8-24 thread or NMO mount • 18' RG58 Low loss cable with PL259 connector

Part No.	Option
PC-PM3	3/8"-24 FEMALE
PC-PM3N	NMO

## PRO QUAD MAGNET MOUNT



Mega Quad Magnet Mount • 4 - 4" Magnets on a 1/4" thick aluminum diamond shape plate • Heavy duty chrome plated stud with 3/8-24 thread or NMO mount • 18' RG58 Low loss cable with PL259 connector

Part No.	Option
PC-PM4	3/8"-24 FEMALE
PC-PM4N	NMO

## TRI MAG MOUNT



Ultra Heavy Duty Triple Magnet Mount • 3 - 5" Magnets on a heavy duty aluminum frame for super stability • Heavy duty chrome plated stud with 3/8-24 thread or NMO mount • 18' RG58 Low loss cable with PL259 connector

Part No.	Option
PCTM5	3/8"-24 FEMALE (Pictured)
PCTM5NMO	NMO

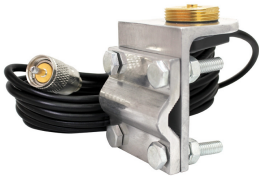
## QUAD MAG MOUNT



Ultra Heavy Duty Quadruple Magnet Mount • 4 - 5" Magnets on a heavy duty aluminum frame for super stability • Heavy duty chrome plated stud with 3/8-24 thread or NMO mount • 18' RG58 Low loss cable with PL259 connector

Part No.	Option
PCTM54	3/8"-24 FEMALE
PCTM54NMO	NMO (Pictured)

## NMO 3-WAY MIRROR MOUNT



Includes 12' cable with PL259 connector • Optional connectors available - BNC (BN), Female FME (NIP), FME to NIP-13 UHF adapter (NKT), Mini UHF (MU), N-Male (N) or TNC (TN)

Part No.	Option
CTMM/MU	MALE MINI UHF
CTMM/NIP	FEMALE FME
CTMM/PL	PL259 (Pictured)

## NMO SURFACE MOUNT



Includes 17' cable with PL259 connector • Optional connectors available - BNC (BN), Female FME (NIP), Mini UHF (MU), FME to NIP-13 UHF adapter (NKT), N-Male (N) or TNC (TN)

Part No.	Option
MSM-17/PL	3/4" HOLE (Pictured)
MSM38-17/PL	3/8" HOLE
MOTO-CAP	RAIN CAP FOR NMO

## NMO 3" MAGNET MOUNT



Includes 12' cable with PL259 connector • Optional connectors available - BNC (BN), Mini UHF (MU), N-Male (N) or TNC (TN)

Part No.	Option
CMAG/MU	MALE MINI UHF
CMAG/NIP	FEMALE FME
CMAG/PL	PL259 (Pictured)
CMAG/SMA	MALE SMA

## NMO MOUNT



All brass NMO mount • 3/4" for standard thin plates • 3/8" for thick or thin plates

Part No.	Option
MOTO-34	3/4 HOLE THIN PLATE (Pictured)
MOTO-38	3/8 HOLE THICK PLATE
MOTO-38S	3/8 HOLE THIN PLATE

# AMATEUR RADIO ANTENNA MOUNTS

## ADJUSTABLE NMO MOUNT



All brass NMO mount • Adjustable design allows for mounting on thicker applications

Part No.	Option
----------	--------

MOTO-38A	
----------	--

## NMO TO 3/8-24 ADAPTER



Converts a NMO mount to a female 3/8-24 thread • Heavy duty one piece design • Spring loaded center pin • Circuit board technology • Chrome plated brass ferrule

Part No.	Option
----------	--------

PC-NMO38	
----------	--

## RIGHT ANGLE UHF ANTENNA MOUNT W/COAX

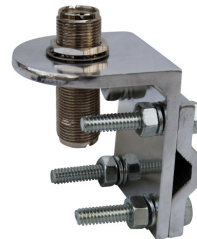


Right angle female UHF connector • 17 Ft. RG58A/U coax w/PL-259 connector

Part No.	Option
----------	--------

PC-UF17PL	SURFACE MOUNT (Pictured)
PC-997	WITH 3-WAY MOUNT
PC-RAUF	CONNECTOR ONLY

## 3-WAY MIRROR MOUNT W/SO-239 TO SO-239 CONNECTOR



Aluminum 3-way mirror mount • Female UHF SO-239 connector to female UHF SO-239 connector

Part No.	Option
----------	--------

PC-998	
--------	--

## FORD 2015 & UP F150 HOOD GROOVE NMO MOUNT



Ideal for aluminum body Ford F150 Trucks • Mounts between the hood & fender • Made from 8 gauge polished aluminum • Includes 12' cable with PL259 connector, stainless steel hardware & protective pad • Optional connectors available - BNC (BN), Female FME (NIP), FME to NIP-13 UHF adapter (NKT), Mini UHF (MU), SMA (SMA)

Part No.	Option
----------	--------

PC21-4006PL	W/ NMO MNT & CABLE
-------------	--------------------

## FORD 1999-2009 F250/F350 NMO MOUNT



Stainless steel fender mount • Includes 12' RG58 cable with PL259 connector • Optional connectors available - BNC (BN), Female FME (NIP), FME to NIP-13 UHF adapter (NKT), Mini UHF (MU), SMA (SMA)

Part No.	Option
----------	--------

PC22-1806PL	PL259
-------------	-------

## FORD 2011-12 F350 & 2012 F250 NMO MOUNT



Stainless steel fender mount • Includes 12' RG58 cable with PL259 connector • Optional connectors available - BNC (BN), Female FME (NIP), FME to NIP-13 UHF adapter (NKT), Mini UHF (MU), SMA (SMA)

Part No.	Option
----------	--------

PC22-2506PL	PL259
-------------	-------

## FORD 2017 & UP F250 - F550 NMO MOUNT



Stainless steel hood groove mount • Includes 12' RG58 cable with PL259 connector • Optional connectors available - BNC (BN), Female FME (NIP), FME to NIP-13 UHF adapter (NKT), Mini UHF (MU), SMA (SMA)

Part No.	Option
----------	--------

PC22-4106PL	PL259
-------------	-------

# AMATEUR RADIO ANTENNA MOUNTS



## FORD 2015 & UP F150 NMO MOUNT

Stainless steel hood mount • Includes 12' RG58 cable with PL259 connector • Optional connectors available - BNC (BN), Female FME (NIP), FME to NIP-13 UHF adapter (NKT), Mini UHF (MU), SMA (SMA)

Part No.	Option
PC22-4006PL	PL259



## DODGE 2004-08 FULL SIZE TRUCK NMO MOUNT

Stainless steel fender mount • Includes 12' RG58 cable with PL259 connector • Optional connectors available - BNC (BN), Female FME (NIP), FME to NIP-13 UHF adapter (NKT), Mini UHF (MU), SMA (SMA)

Part No.	Option
PC32-1506PL	PL259



## DODGE 2009 & UP FULL SIZE TRUCK NMO MOUNT

Stainless steel hood groove mount • Includes 12' RG58 cable with PL259 connector • Optional connectors available - BNC (BN), Female FME (NIP), FME to NIP-13 UHF adapter (NKT), Mini UHF (MU), SMA (SMA)

Part No.	Option
PC32-3106PL	PL259



## CHEVY/GMC 2010 & UP TRUCK NMO MOUNT

Stainless steel fender mount • Includes 12' RG58 cable with PL259 connector • Optional connectors available - BNC (BN), Female FME (NIP), FME to NIP-13 UHF adapter (NKT), Mini UHF (MU), SMA (SMA)

Part No.	Option
PC12-2706PL	PL259



## CHEVY/GMC 2001-06 TRUCK NMO MOUNT

Stainless steel fender mount • Includes 12' RG58 cable with PL259 connector • Optional connectors available - BNC (BN), Female FME (NIP), FME to NIP-13 UHF adapter (NKT), Mini UHF (MU), SMA (SMA)

Part No.	Option
PC12-1906PL	PL259



image not available

## JEEP 2018 & UP WRANGLER JL REAR DOOR HINGE MOUNT

Aluminum rear door hinge mount • Made from 5 gauge polished aluminum • Includes 18' cable with PL259 connector and stainless steel mounting hardware • Optional connectors available - BNC (BN), Female FME (NIP), FME to NIP-13 UHF adapter (NKT), Mini UHF (MU), SMA (SMA)

Part No.	Option
PC31-3206PL	PL259

# OPTIMIZED OEM REPLACEMENT ANTENNAS

## FREIGHTLINER



### FREIGHTLINER DAY CAB REPLACEMENT ANTENNAS

42" & 54" Direct replacement antennas for 2010 and newer Freightliner P3 & P4 Cascadia day cab trucks • 750 Watt rated • Top Loaded 1/4 wave helically wound antenna • Chrome plated 3/8-24 ferrule • Factory tuned and field adjustable • Available in black ( B ), white ( W ) or red ( R )



Part No.	Option	Length
BD42	CB / MULTIBAND	42 IN - 1/2 IN DIA
FLP4-MB54	MULTIBAND	54 IN - 3/8 IN DIA
FLP4-CB54	CB	54 IN - 3/8 IN DIA
FLP4-RAD54	AM/FM	54 IN - 3/8 IN DIA

## FREIGHTLINER



### FREIGHTLINER SLEEPER BACK OF CAB REPLACEMENT ANTENNAS

60" Replacement antennas for traditional system 2010 and newer Freightliner P3 Cascadia sleeper trucks with side body mounts • Separate CB & AM/FM/Weather antennas to be used with single frequency systems • 750 Watt rated • Heavy duty 3/8" fiberglass whip • Top Loaded 1/4 wave helically wound antenna • 20 Gauge copper wire • Chrome plated 3/8-24 ferrule • Factory tuned and field adjustable • Available in black ( B ), white ( W ) or red ( R )



Part No.	Option	Length
FLP4-CB60	CB	60 IN - 3/8 IN DIA
FLP4-RAD60	AM / FM / WEATHER	60 IN - 3/8 IN DIA

## KENWORTH



### KENWORTH TRADITIONAL SYSTEM REPLACEMENT ANTENNAS

54" Replacement antennas for traditional system Kenworth T660, T680 & T880 trucks • 750 Watt rated • Heavy duty 3/8" fiberglass whip • Top Loaded 1/4 wave helically wound antenna • 20 Gauge copper wire • Chrome plated 3/8-24 ferrule • Factory tuned and field adjustable • Available in black ( B ), white ( W ) or red ( R )



Part No.	Option	Length
KW54	CB W/WEATHERBAND	54 IN - 3/8 IN DIA

# OPTIMIZED OEM REPLACEMENT ANTENNAS

## PETERBILT



### PETERBILT TRADITIONAL SYSTEM REPLACEMENT ANTENNAS

54" Replacement CB antennas with Weatherband for traditional system Peterbilt 567, 579 & 587 model trucks • 750 Watt rated • Heavy duty 3/8" fiberglass whip • Top Loaded 1/4 wave helically wound antenna • 20 Gauge copper wire • Chrome plated 3/8-24 ferrule • Factory tuned and field adjustable • Available in black ( B ), white ( W ) or red ( R )



Part No.	Option	Length
PBS54	SLEEPER	54 IN - 3/8 IN DIA
PBD54	DAY CAB	54 IN - 3/8 IN DIA
PBB54	COWLING - BACK	54 IN - 3/8 IN DIA

## NAVISTAR



### NAVISTAR TRADITIONAL SYSTEM REPLACEMENT ANTENNAS

54" & 60" Replacement CB antennas with Weatherband for traditional system Navistar LTL, DuraStar, LoneStar & ProStar model trucks • 750 Watt rated • Top Loaded 1/4 wave helically wound antenna • Chrome plated 3/8-24 ferrule • Factory tuned and field adjustable • Available in black ( B ), white ( W ) or red ( R )



Part No.	Option	Length
NVM45	LTL SERIES MIRROR ARM	54 IN - 1/2 IN DIA
NVM54	PROSTAR MIRROR HEAD	54 IN - 3/8 IN DIA
NVS60	LTL SERIES BACK OF CAB	60 IN - 3/8 IN DIA

## VOLVO / MACK



### VOLVO/MACK REPLACEMENT ANTENNAS

48" & 54" Designed as a upgraded replacement for multi-frequency or traditional Volvo & Mack truck systems • CB - AM/FM - Weather Frequencies • 750 Watt rated • 5/16" Durable fiberglass whip • Top Loaded 1/4 wave helically wound antenna with frequency resonate copper stripping • Works with 2010 - 2014 Volvo & Mack trucks • Factory tuned and field adjustable • Available in black ( B ), white ( W ) or red ( R )



Part No.	Option	Length
MBW400	MULTIBAND	48 IN - 5/16 IN DIA
MBW54	MULTIBAND	54 IN - 5/16 IN DIA
VM54	CB W/WEATHERBAND	54 IN - 5/16 IN DIA

# UNIVERSAL OEM ANTENNA SYSTEMS

## OEM BACK OF CAB ANTENNA KITS

### CB ANTENNA KIT



Mounts on the back of the truck cab • Kit includes: 5 FT CB antenna, Back of cab mount, 18 FT PRO8X black cable, Antenna guide & mounting hardware

Part No.	Option	Length
FL-CB5K	CB	5 FT

## OEM BACK OF CAB ANTENNA KITS

### AM/FM ANTENNA KIT



Mounts on the back of the truck cab • Kit includes: 5 FT AM/FM antenna, Back of cab mount, 19 FT RG62 cable, Antenna guide & mounting hardware

Part No.	Option	Length
FL-AF5K	AM/FM	5 FT

## AFTERMARKET ANTENNA KITS

### SPOT MIRROR ANTENNA MOUNT KIT



Designed to mount on passenger side spot mirror • Kit includes: 4 FT Flex CB antenna, Slimline mirror mount, Stainless steel mounting bar with M6 thread & Terminator cable assembly with FME/PL259 connector

Part No.	Option	Length
PC-K4SM	SPOT MIRROR	4 FT

## AFTERMARKET ANTENNA KITS

### REAR OF CAB ANTENNA MOUNT KIT



Designed to mount on rear of the cab in any M6 bolt location • Kit includes: 5 FT Bulldog CB antenna, Double groove mirror mount, Stainless steel mounting bar with M6 thread & Terminator cable assembly with FME/PL259 connector

Part No.	Option	Length
PC-K5RC	REAR OF CAB	5 FT

# OEM REPLACEMENT PARTS



## BNC TO UHF MALE OEM REPLACEMENT CABLES

Low loss RG58U (single) or RG59U (dual) cable • High quality PL259 • Premium BNC connector



Part No.	Option	Length
1SHBN	SINGLE	12 IN
1DHBN	DUAL	12 IN



## MOTOROLA MALE TO UHF MALE OEM REPLACEMENT CABLE

Low loss RG58U cable • High quality PL259 • Male Motorola plug



Part No.	Option	Length
12SMMPL	SINGLE	12 IN



## MINI UHF FEMALE TO UHF MALE OEM REPLACEMENT CABLES

Low loss RG58U (single) or RG59U (dual) cable • High quality PL259 • Female Mini UHF



Part No.	Option	Length
1SH-FMPL	SINGLE	12 IN
1DH-FMPL	DUAL	12 IN



## MOTOROLA FEMALE TO UHF MALE OEM REPLACEMENT CABLES

Low loss RG58U (single) or RG59U (dual) cable • High quality PL259 • Female Motorola plug



Part No.	Option	Length
12MFPL	SINGLE	12 IN
12DMFPL	DUAL	12 IN



## MINI UHF MALE TO UHF MALE OEM REPLACEMENT CABLES

Low loss RG58U (single) or RG59U (dual) cable • High quality PL259 • Male Mini UHF



Part No.	Option	Length
1SH-MPL	SINGLE	12 IN
1DH-MPL	DUAL	12 IN



## BNC TO UHF FEMALE OEM REPLACEMENT CABLE

Low loss RG58U cable • High quality SO239 • Premium BNC connector



Part No.	Option	Length
12BNSO	SINGLE	12 IN

# OEM REPLACEMENT PARTS

## BNC TO MOTOROLA FEMALE OEM REPLACEMENT CABLE



Low loss RG58U cable • Premium BNC connector • Female Motorola plug



Part No.	Option	Length
12MFBN	SINGLE	12 IN

## EXTENDED STUD SO-239 BASE



For use in mirror head mounted antenna systems • Extended stud SO-239 base • 1-3/8" stud length including 3/8" un-threaded collar • 3/8-24 thread • 3/4" Hex base with 5/8-24 thread

Part No.	Option	Length
JBC91034L-1EXT	FOR MIRROR HEAD	

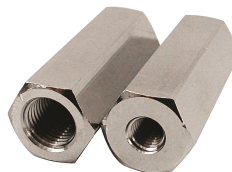
## OEM REPLACEMENT BODY MOUNT



Direct replacement for body mount OEM truck systems • 2010 and newer Freightliner P3 & P4 Cascadia and Navistar LTL sleeper trucks

Part No.	Option	Length
SBMFL1	FREIGHTLINER SIDE	
SBMFL1-BOC	FREIGHTLINER BACK	
SBMNV-BOC	NAVISTAR BACK	

## CUSTOM THREAD COUPLER NUT



1-1/2" Extra long hex coupler nut • Custom 1/4-28 thread to standard 3/8-24 thread • Fits OEM sidebody mount for 2009 and older trucks

Part No.	Option	Length
RHN3814		

## OEM REPLACEMENT STUD



1-1/2" Extra long coupler nut SO-239 stud • Direct replacement for enclosed molded mirror systems • Available with 3/4" hex SO-239 body • Replacement parts available

Part No.	Option	Length
JBC910L	STANDARD	
JBC91034L	3/4" HEX BODY	
JBC91034L-1	BASE ONLY - 3/4" HEX	
JBC91034L-HN	HEX COUPLER NUT	
JBC91034L-ILW	STAR WASHER	
JBC91034L-PSW	STEP WASHER	

## ANTENNA GUIDES



Antenna guides for different mounting applications

Part No.	Option	Length
AG250 (Pictured)	FREIGHTLINER	3"
NV-AG	NAVISTAR BACK OF CAB	

# M213™ CABLE & CONNECTORS

## M213™ COAXIAL CABLE

M213™ Quantum-Flex double shielded coax breaks all of the rules. We used modern poly dielectrics and state of the art manufacturing processes to offer improved flexibility without any reduction in power handling. M213™ handles the power and holds its impedance even when bent unlike similar sized foam dielectric cables. A high strand count tinned copper braided shield (96%) covers a free-floating aluminum foil shield (100%) which makes M213™ ultra-low loss. Double shielding eliminates unwanted signal leakage and by not bonding the foil to the poly dielectric, we've reduced thermal losses, improved flexibility and made cable termination even simpler. M213™ uses an ultra-fine high strand count pure copper center conductor. No copper plated aluminum or steel conductors here. Pure copper assures minimal series resistance, which is what it takes to maximize power transfer without loss. The fine strand count means more surface area and greater flexibility. For consistency, reliability and flexibility look no further than M213™ Quantum-Flex double shielded low loss coax.



**Center Conductor:** 15 Gauge Stranded Copper

**Dielectric:** Solid Polyethylene 5.1mm

**Foil Tape:** Aluminum 100%

**Braiding:** Tinned Copper 96% Coverage

**Jacket:** Black PVC - 7.6mm OD

**Attenuation:**

Frequency (MHz)	Max.(dB/100ft)
5	0.55
14	0.88
27	1.21
52	1.66
146	2.80
221	3.50
435	5.11
915	7.69

Part No.	Length
M213-500	500 FT

## UHF CONNECTOR FOR M213™

High quality solder type male UHF connector exclusively for M213™ coaxial cable



Part No.	Option
DX-PL259	SOLDER

## FEMALE FME CONNECTOR FOR M213™

High quality femal FME connector exclusively for M213™ coaxial cable • Allow use of male FME adapters for all popular connectors



Part No.	Option
NIP-M213	CRIMP

## FME NIPPLE ADAPTER - MALE TO MALE

Adapters for FME female to all popular connectors



Part No.	Option
NIP-9	TO N MALE
NIP-10	TO MINI UHF MALE
NIP-11	TO BNC MALE
NIP-13	TO UHF MALE
NIP-14	TO SMA MALE

## M213™ CABLE ASSEMBLIES WITH MALE UHF CONNECTORS

M213™ Coaxial cable • Double-shielded 95% tinned copper braid over aluminum foil tape • Bare copper stranded center conductor • PE dielectric • High quality hand soldered DX-PL259 male UHF connectors on each end • 100% Tested



Part No.	Option
M213-9	9 FT
M213-12	12 FT
M213-18	18 FT

## M213™ CABLE ASSEMBLIES WITH FEMALE FME CONNECTOR

M213™ Coaxial cable • Double-shielded 95% tinned copper braid over aluminum foil tape • Bare copper stranded center conductor • PE dielectric • Hand soldered connections • NIP-M213 Female FME connector on one end & DX-PL259 on the other • For FME connectors on both ends add a 2 behind FME • 100% Tested



Part No.	Option
M213-9FME	9 FT
M213-12FME	12 FT
M213-18FME	18 FT

# COAXIAL CABLE ASSEMBLIES



MADE IN  
U. S. A.  
WITH GLOBAL COMPONENTS

## RG8X CABLE

MINI 8 • Bare copper stranded center conductor • High quality soldered PL259 or lug connectors • 95% bare copper braid • Foam dielectric • Hand soldered connections • 100% Tested • Add (L) to end of model number for lug connector • Available in gray, black ( B ) or clear ( C )

### PRO SERIES

Part No.	Length
PR1-8X	12 IN
PR1.5-8X	18 IN
PR3-8X	3 FT
PR6-8X	6 FT
PR9-8X	9 FT
PR12-8X	12 FT
PR18-8X	18 FT
PR20-8X	20 FT
PR21-8X	21 FT
PR25-8X	25 FT
PR50-8X	50 FT
PR75-8X	75 FT
PR100-8X	100 FT



MADE IN  
U. S. A.  
WITH GLOBAL COMPONENTS

## RG8X CABLE W/ REMOVABLE PL259

MINI 8 • Bare copper stranded center conductor • High quality soldered PL259 on one end and a female FME connector on the other • High quality FME to UHF adapter (NIP-13) included • 95% bare copper braid • Foam dielectric • Hand soldered connections • 100% Tested • Replace (N13) with (FME) to exclude the NIP-13 adapter • Available in gray or black ( B )

### PRO SERIES

Part No.	Length
PR3-8XN13	3 FT
PR6-8XN13	6 FT
PR9-8XN13	9 FT
PR12-8XN13	12 FT
PR18-8XN13	18 FT
PR21-8XN13	21 FT
PR25-8XN13	25 FT
PR50-8XN13	50 FT
PR75-8XN13	75 FT
PR100-8XN13	100 FT



MADE IN  
U. S. A.  
WITH GLOBAL COMPONENTS

## S8X CABLE

SUPER MINI 8 • Tin plated copper stranded center conductor • Teflon dielectric soldered PL259 connectors • 96% tin plated copper braid • Foam dielectric • Hand soldered connections • 100% Tested • Add (L) to end of model number for lug connector • Available in clear jacket only

### PRO SERIES

Part No.	Length
PR3-S8X	3 FT
PR6-S8X	6 FT
PR9-S8X	9 FT
PR12-S8X	12 FT
PR18-S8X	18 FT
PR20-S8X	20 FT
PR21-S8X	21 FT
PR25-S8X	25 FT
PR50-S8X	50 FT
PR75-S8X	75 FT
PR100-S8X	100 FT

# COAXIAL CABLE ASSEMBLIES



MADE IN  
U. S. A.  
WITH GLOBAL COMPONENTS

## S8X CABLE W/ REMOVABLE PL259

SUPER MINI 8 • Tin plated copper stranded center conductor • High quality soldered PL259 on one end and a female FME connector on the other • High quality FME to UHF adapter (NIP-13) included • 96% tin plated copper braid • Foam dielectric • Hand soldered connections • 100% Tested • Replace (N13) with (FME) to exclude the NIP-13 adapter • Available in clear jacket only

### PRO SERIES

Part No.	Length
PR3-S8XN13	3 FT
PR6-S8XN13	6 FT
PR9-S8XN13	9 FT
PR12-S8XN13	12 FT
PR18-S8XN13	18 FT
PR21-S8XN13	21 FT
PR25-S8XN13	25 FT
PR50-S8XN13	50 FT
PR75-S8XN13	75 FT
PR100-S8XN13	100 FT



MADE IN  
U. S. A.  
WITH GLOBAL COMPONENTS

## SD8X CO-PHASE CABLE

SUPER DUAL MINI 8 • True 75 Ohm impedance • Tin plated copper stranded conductor • Teflon dielectric soldered PL259 connectors • 96% tin plated copper braid • Foam dielectric • Hand soldered connections • 100% Tested • Add (L) to end of model number for lug connector • Available in clear jacket only

### PRO SERIES

Part No.	Length
PR9-SD8X	9 FT
PR12-SD8X	12 FT
PR18-SD8X	18 FT
PR21-SD8X	21 FT



MADE IN  
U. S. A.  
WITH GLOBAL COMPONENTS

## SD8X CO-PHASE CABLE W/ REMOVABLE PL259

SUPER DUAL MINI 8 • True 75 Ohm impedance • Tin plated copper stranded conductor • High quality soldered PL259 on one end and two female FME connectors on the other ends • Two high quality FME to UHF adapters (NIP-13) included • 96% tin plated copper braid • Foam dielectric • Hand soldered connections • 100% Tested • Replace (N13) with (FME) to exclude the NIP-13 adapters • Available in clear jacket only

### PRO SERIES

Part No.	Length
PR9-SD8XN13	9 FT
PR12-SD8XN13	12 FT
PR18-SD8XN13	18 FT
PR21-SD8XN13	21 FT

# COAXIAL CABLE ASSEMBLIES

## RG8U CABLE



LOW LOSS RG8U • Bare copper stranded center conductor • High quality soldered PL259 • 95% bare copper braid • Foam dielectric • Hand soldered connections • 100% Tested • Available in black jacket only



### PRO SERIES

Part No.	Length
1.5RG8UB	18 IN
3RG8UB	3 FT
6RG8UB	6 FT
9RG8UB	9 FT
12RG8UB	12 FT
18RG8UB	18 FT
20RG8UB	20 FT
21RG8UB	21 FT
25RG8UB	25 FT
50RG8UB	50 FT
75RG8UB	75 FT
100RG8UB	100 FT

## RG213 CABLE



HIGH QUALITY RG213 • Bare copper stranded center conductor • High quality soldered PL259 or TNC connectors • 95% bare copper braid • Polyethylene dielectric • Hand soldered connections • 100% Tested • Add (T) to the end of model number for TNC connector • Available in black jacket only



### PRO SERIES

Part No.	Length
3RG213	3 FT
6RG213	6 FT
9RG213	9 FT
12RG213	12 FT
18RG213	18 FT
21RG213	21 FT
25RG213	25 FT
50RG213	50 FT
75RG213	75 FT
100RG213	100 FT

## RG58 CABLE



HIGH QUALITY RG58 • Bare copper stranded center conductor • High quality soldered PL259 or lug connectors • 95% bare copper braid • Polyethylene dielectric • Hand soldered connections • 100% Tested • Replace (PL) with (L) to end of model number for lug connector • Available in black jacket only



### PRO SERIES

Part No.	Length
803PL	3 FT
806PL	6 FT
809PL	9 FT
812PL	12 FT
818PL	18 FT
820PL	20 FT
821PL	21 FT
825PL	25 FT
850PL	50 FT
875PL	75 FT
8100PL	100 FT

# COAXIAL CABLE ASSEMBLIES

## PRO SERIES

### RG58 CABLE WITH PL259 & FME



HIGH QUALITY RG58 • Bare copper stranded center conductor • High quality soldered PL259 and female FME • 95% bare copper braid • Polyethylene dielectric • Hand soldered connections • 100% Tested • Available in black jacket only

Part No.	Length
PR809FME	9 FT
PR812FME	12 FT
PR818FME	18 FT



## PRO SERIES

### RG59 CO-PHASE CABLE



HIGH QUALITY RG59 • Bare copper stranded center conductor • High quality soldered PL259 or lug connectors • 95% bare copper braid • Polyethylene dielectric • Hand soldered connections • 100% Tested • Replace (P) with (L) to end of model number for lug connector • Available in black jacket only

Part No.	Length
DH9P	9 FT
DH12P	12 FT
DH18P	18 FT
DH21P	21 FT



## PRO SERIES

### RG59 CO-PHASE CABLE W/ REMOVABLE PL259



HIGH QUALITY RG59 • Bare copper stranded center conductor • High quality soldered PL259 on one end and female FME connectors on the other • High quality FME to UHF adapters (NIP-13) included • 95% bare copper braid • Polyethylene dielectric • Hand soldered connections • 100% Tested • Replace (N13) with (FME) to exclude the NIP-13 adapter • Available in black jacket only

Part No.	Length
DH9N13	9 FT
DH12N13	12 FT
DH18N13	18 FT



# COAXIAL CABLE ASSEMBLIES

## TERMINATOR SERIES RG58 CABLE



ProComm's patented Terminator connector • 18 Feet of high quality RG58 cable with PL-259 (UHF) connector or NIP-13 (FME to UHF) adapter • Chrome plated hex nut accepts standard 3/8-24 thread antennas

### TERMINATOR SERIES

Part No.	Length
HS818T-PL	18 FT W/PL259
HS818T-NKT	18FT W/NIP-13

## STANDARD RG58 CABLE - MOLDED ENDS



RG58 • Bare copper center conductor • Molded PL259 or lug connectors • bare copper braid • Polyethylene dielectric • Replace (PL) with (L) to end of model number for lug connector • Available in black jacket only

### - HIGH SPEC - IMPORTED

Part No.	Length
HS803PL	3 FT
HS806PL	6 FT
HS809PL	9 FT
HS812PL	12 FT
HS818PL	18 FT

## CO-PHASE RG59 CABLE - MOLDED ENDS



RG59 • Bare copper center conductor • Molded PL259 or lug connectors • bare copper braid • Polyethylene dielectric • Replace (P) with (L) to end of model number for lug connector • Available in black jacket only

### - HIGH SPEC - IMPORTED

Part No.	Length
HSDH9P	9 FT
HSDH12P	12 FT
HSDH18P	18 FT

# PRO SERIES BULK COAXIAL CABLE



## BULK COAX CABLE

SPOOLED CABLE • 500 Ft spools standard •  
Special lengths & volume purchases available

Part No.	Length	Color	Dielectric	Conductor	Braid	Impedance
PRO58U-500	500 FT	BLACK	SOLID PE - .116	20 GA SOLID	95% BARE COPPER	50 Ohm
PRO58U-1000	1000 FT	BLACK	SOLID PE - .116	20 GA SOLID	95% BARE COPPER	50 Ohm
PRO58AU-500	500 FT	BLACK	SOLID PE - .116	20 GA (19X33) STRANDED	95% BARE COPPER	50 Ohm
PRO58AU-1000	1000 FT	BLACK	SOLID PE - .116	20 GA (19X33) STRANDED	95% BARE COPPER	50 Ohm
PRO59AU-500	500 FT	BLACK	SOLID PE - .116	20 GA (19X33) STRANDED	85% BARE COPPER	75 Ohm
PRO59AU-1000	1000 FT	BLACK	SOLID PE - .116	20 GA (19X33) STRANDED	85% BARE COPPER	75 Ohm
PRO8X-500	500 FT	GRAY	FOAM PE - .155	16 GA (19X28) STRANDED	95% BARE COPPER	50 Ohm
PRO8X-1000	1000 FT	GRAY	FOAM PE - .155	16 GA (19X28) STRANDED	95% BARE COPPER	50 Ohm
PRO8XB-500	500 FT	BLACK	FOAM PE - .155	16 GA (19X28) STRANDED	95% BARE COPPER	50 Ohm
PRO8XB-1000	1000 FT	BLACK	FOAM PE - .155	16 GA (19X28) STRANDED	95% BARE COPPER	50 Ohm
PRO8XC-500	500 FT	CLEAR	FOAM PE - .155	16 GA (19X28) STRANDED	95% BARE COPPER	50 Ohm
PRO8XC-1000	1000 FT	CLEAR	FOAM PE - .155	16 GA (19X28) STRANDED	95% BARE COPPER	50 Ohm
PROS8X-500	500 FT	CLEAR	FOAM PE - .155	16 GA (19X28) STRANDED	96% TINNED COPPER	50 Ohm
PROS8X-1000	1000 FT	CLEAR	FOAM PE - .155	16 GA (19X28) STRANDED	96% TINNED COPPER	50 Ohm
PROSD8X-500	500 FT	CLEAR	FOAM PE - .155	16 GA (19X28) STRANDED	96% TINNED COPPER	TRUE 75 Ohm
PRO8UB-500	500 FT	BLACK	SOLID PE - .146	13 GA (7X21) STRANDED	95% BARE COPPER	50 Ohm
PRO174-1000	1000 FT	BLACK	SOLID PE - .060	26 GA (7X34) STRANDED	95% BARE COPPER	50 Ohm
PRO213-500	500 FT	BLACK	SOLID PE - .285	13 GA (7X21) STRANDED	100% FOIL & 94% TINNED COPPER	50 Ohm
PRO200-500	500 FT	BLACK	FOAM PE - .116	17 GA SOLID	100% FOIL & 94% TINNED COPPER	50 Ohm

# ANTENNA STUDS



**HEAVY-DUTY LUG STUD**

Part No.	Option
JBC900	NO TERMINAL
JBC901	WITH RING TERMINAL (Pictured)



**STANDARD SO239 STUD**

Part No.	Option
JBC910	9/16" HEX NUT



**HEAVY-DUTY DOUBLE HEX SO239 STUD**

Part No.	Option
JBC910H	5/8" HEX NUT & WIDER SO239 HEX



**EXTRA LONG SO-239 STUD**

Part No.	Option
JBC910L	EXTRA LONG HEX NUT



**REPLACEMENT PARTS**

Part No.	Option
DHN-38	CHROME PLATED DOUBLE HEX NUT
NYS-38	NYLON STEP WASHER
STR-38	STAR WASHER



**HEAVY-DUTY DOME SO239 STUD**

Part No.	Option
JBC930	



**HEAVY-DUTY DOUBLE HEX RIGHT ANGLE SO239 STUD**

Part No.	Option
RA910H	



**HEAVY-DUTY DOME RIGHT ANGLE SO239 STUD**

Part No.	Option
RA930	

# ALUMINUM ANTENNA MOUNTS



**CASCADIA P3 MIRROR BASE  
ANTENNA MOUNT  
2008 & UP - WORKS ON EITHER  
SIDE**

Part No.	Option
PC-A50-02	W/ HD SO239 (Pictured)
PC-A50-03	TERMINATER CABLE KIT
PC-A50-05	W/ DOME STUD



**NEW CASCADIA P4 MIRROR  
BASE ANTENNA MOUNT  
2017 & UP - WORKS ON EITHER  
SIDE**

Part No.	Option
PC-A55-02	W/ HD SO239 (Pictured)
PC-S55-03	TERMINATER CABLE KIT
PC-A55-05	W/ DOME STUD



**SPOT MIRROR LOCATION  
MOUNT**

Part No.	Option
PC-A60	3.75" BAR



**DUAL SPOT MIRROR LOCATION  
MOUNT**

Part No.	Option
PC-A65	3.75" BAR & ADJUSTABLE ANGLE W/SO239



**2015+ FORD F150 HOOD  
GROOVE MOUNT  
IDEAL FOR ALUMINUM BODY  
FORD F150 TRUCKS**

Part No.	Option
PC21-4000	MOUNT ONLY
PC21-4001	W/ LUG STUD
PC21-4002	W/ HD SO239
PC21-4003	TERMINATER CABLE KIT (Pictured)
PC21-4004	ANTENNA KIT W/ TERM CABLE



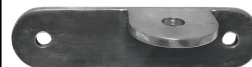
**SPARE TIRE MOUNT FOR '07 &  
UP JEEP WRANGLER, JK &  
RUBICON**

Part No.	Option
PC31-3000	MOUNT ONLY
PC31-3001	W/ LUG STUD
PC31-3002	W/ HD SO239
PC31-3003	TERMINATER CABLE KIT (Pictured)
PC31-3004	ANTENNA KIT W/ TERM CABLE



**UNIVERSAL JEEP TAIL LIGHT  
MOUNT FOR '98 TO '06 JEEPS**

Part No.	Option
PC31-3500	MOUNT ONLY
PC31-3502	W/ HD SO239 (Pictured)
PC31-3503	TERMINATER CABLE KIT
PC31-3504	ANTENNA KIT W/ TERM CABLE



**REAR DOOR HINGE MOUNT FOR  
2018 & UP JEEP WRANGLER JL**

Part No.	Option
PC31-3200	MOUNT ONLY (Pictured)
PC31-3202	W/ HD SO239
PC31-3203	TERMINATOR CABLE KIT
PC31-3204	ANTENNA KIT W/TERM CABLE
FOR BLACK	ADD B BEHIND NUMBER

# ALUMINUM ANTENNA MOUNTS



**DELUXE TWO-SIDED MIRROR MOUNTS**

Part No.	Option
JBC1095	W/ 2 HD SO239 (Pictured)
JBC1090	W/ 2 LUG STUDS
JBC1091	MOUNT ONLY



**MEGA DOUBLE GROOVE MIRROR MOUNT - 2 1/2" WIDE**

Part No.	Option
HD995H	W/ HD SO239 (Pictured)
HD991H	MOUNT ONLY



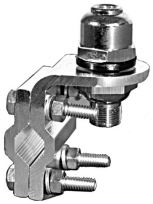
**DELUXE 3-WAY MIRROR MOUNTS**

Part No.	Option
JBC995	W/ HD SO239 (Pictured)
JBC990	W/ LUG STUD
JBC991	MOUNT ONLY
JBC993	W/ BEEHIVE STUD



**HEAVY-DUTY DOUBLE GROOVE MIRROR MOUNTS**

Part No.	Option
JBC995H	W/ HD SO239 (Pictured)
JBC990H	W/ LUG STUD
JBC991H	MOUNT ONLY



**HEAVY-DUTY MIRROR MOUNTS WITH DOME STUD**

Part No.	Option
JBC935	3-WAY MOUNT
JBC935H	DOUBLE GROOVE (Pictured)
HD935H	MEGA DOUBLE GROOVE



**1-1/8" OMNI GRIP MIRROR MOUNTS - FREIGHTLINER**

Part No.	Option
JBC535	W/ HD SO239 (Pictured)
JBC530	W/ LUG STUD
JBC531	MOUNT ONLY



**1-1/4" OMNI GRIP MIRROR MOUNTS - INTERNATIONAL**

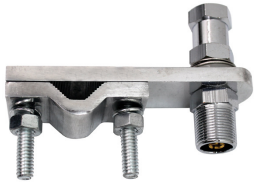
Part No.	Option
JBC545	W/ HD SO239 (Pictured)
JBC540	W/ LUG STUD
JBC541	MOUNT ONLY



**SLIM LINE MIRROR MOUNTS**

Part No.	Option
JBC362	W/ HD SO239 (Pictured)
JBC363	W/ LUG STUD
JBC361	MOUNT ONLY
JBC362H	DOUBLE GROOVE W/ HD SO239
JBC361H	DOUBLE GROOVE MOUNT ONLY

# ALUMINUM ANTENNA MOUNTS



**3 1/2" HORIZONTAL MIRROR MOUNTS**

Part No.	Option
JBC332S	W/ HD SO239 (Pictured)
JBC333S	W/ LUG STUD
JBC331S	MOUNT ONLY
JBC332SH	DOUBLE GROOVE W/ HD SO239
JBC331SH	DOUBLE GROOVE MOUNT ONLY



**6" HORIZONTAL MIRROR MOUNTS**

Part No.	Option
JBC332	W/ HD SO239 (Pictured)
JBC333	W/ LUG STUD
JBC331	MOUNT ONLY



**6" FLAT BAR MIRROR MOUNTS**

Part No.	Option
JBC436	W/ HD SO239 (Pictured)
JBC437	W/ LUG STUD
JBC435	MOUNT ONLY



**QUICK RELEASE HINGE MOUNTS**

Part No.	Option
JBC830	W/ HD SO239 (Pictured)
JBC831	W/ LUG STUD
JBC833	MOUNT ONLY



**180° & 360° ADJUSTABLE BAR MIRROR MOUNTS**

Part No.	Option
JBC492	180° W/ HD SO239 (Pictured)
JBC491	180° MOUNT ONLY
JBC592	360° W/ HD SO239
JBC591	360° MOUNT ONLY



**45° MOUNTS FOR GOOSENECK MIRRORS**

Part No.	Option
JBC462	W/ HD SO239 (Pictured)
JBC463	W/ LUG STUD
JBC461	MOUNT ONLY



**STANDARD FENDER MOUNTS**

Part No.	Option
JBC472	W/ HD SO239 (Pictured)
JBC473	W/ LUG STUD
JBC471	MOUNT ONLY



**HEAVY-DUTY BUMPER MOUNTS**

Part No.	Option
JBC482	W/ HD SO239 (Pictured)
JBC483	W/ LUG STUD
JBC481	MOUNT ONLY

# ANTENNA MOUNTS

## HEAVY-DUTY BALL MOUNT WITH 3-1/2" BACK MOUNTING PLATE



Heavy duty CB radio antenna ball mount • 3-1/2" Mounting plate • Adjustable mounting angle • Available with lug or UHF connector (SO-239)

Part No.	Option
JBC985-3	LUG CONNECTOR (Pictured)
JBC985-3P	UHF CONNECTOR

## HEAVY-DUTY BALL MOUNT WITH SPRING & 3-1/2" BACK MOUNTING PLATE AND BARREL SPRING



Heavy duty CB antenna ball mount with chrome plated barrel spring • 3-1/2" Mounting plate • Adjustable mounting angle • Available with lug or UHF connector (SO-239)

Part No.	Option
JBC986	LUG CONNECTOR (Pictured)
JBC986P	UHF CONNECTOR

## 3" HEAVY DUTY CHROME PLATED MAGNET MOUNT WITH PL259



3" Chrome plated magnet mount • 3/8-24 Thread fits standard antennas • Available with 12' or 18' of RG58 cable and PL259 connector • Add (/BN) for BNC connector

Part No.	Option
JBC110-12	12' COAX (Pictured)
JBC110-18	18' COAX

## 4" PLASTIC COVERED MAGNET MOUNT WITH PL259



Powerful 4" 8-pole magnet • Plastic cover eliminates rust • 18' Low loss RG58 cable with PL259 connector

Part No.	Option
JBC114	18' COAX W/PL259

## 5" HEAVY DUTY CHROME PLATED MAGNET MOUNT WITH 18' COAX



5" Chrome plated magnet mount • 18' of RG58 cable and PL259 connector • 3/8-24 Thread fits standard antennas

Part No.	Option
JBC115	PL259 CONNECTOR

## HEAVY-DUTY BEEHIVE SURFACE MOUNT WITH STAR WASHER



Part No.	Option
JBC989	SO239 CONNECTOR

# ANTENNA MOUNTS

## HEAVY DUTY FENDER MOUNT KIT



Aluminum fender mount • Chrome plated double hex nut • Uses ProComm's patented Terminator connector • High quality RG58 cable with nipple connector • NIP to UHF adapter included • Accepts standard 3/8-24 thread antennas

Part No.	Option
JBC472C	18' COAX

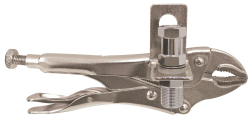
## WEATHERPROOF TRUNK LIP MOUNT WITH PL259 CONNECTOR



Weatherproof trunk lip mount • 18' Coax with PL259 connection • Fits standard 3/8-24 thread antenna

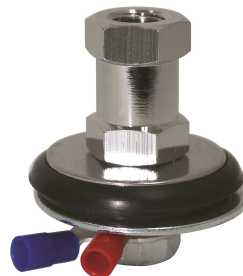
Part No.	Option
JBC105	18' COAX

## QUICK RELEASE VISE GRIP MOUNTS



Part No.	Option
JBC955	W/ HD SO239 (Pictured)
JBC950	W/ LUG STUD
JBC951	MOUNT ONLY

## HEAVY-DUTY SURFACE MOUNT



Part No.	Option
JBC504	LUG TERMINAL

## TERMINATOR SERIES SURFACE MOUNT KIT



Low profile heavy duty surface mount • Dual o-ring waterproof design • Uses ProComm's patented Terminator connector • High quality RG58 cable with nipple connector • NIP to UHF adapter included • Accepts standard 3/8-24 thread antennas

Part No.	Option
TSM-18	18' COAX

## TERMINATOR SERIES RG58 CABLE



ProComm's patented Terminator connector • 18 Feet of high quality RG58 cable with PL-259 (UHF) connector or NIP-13 (FME to UHF) adapter • Chrome plated hex nut accepts standard 3/8-24 thread antennas

Part No.	Option
HS818T-PL	PL259 CONNECTOR
HS818T-NKT	FME TO UHF ADAPTER (Pictured)

# ANTENNA MOUNT ACCESSORIES



## CHROME PLATED FOLD-OVER MOUNT

Part No.	Option	Length
JBC100	180° SWIVEL	



## CHROME PLATED QUICK DISCONNECT

Part No.	Option	Length
JBC201L	STAINLESS STEEL SPRING & PIN	



## EXTRA HEAVY DUTY BARREL SPRINGS

Part No.	Option	Length
JBC305	CHROME PLATED	



## STAINLESS STEEL BARREL SPRINGS

Part No.	Option	Length
JBC305-SS	STAINLESS STEEL	



## STAINLESS STEEL SPRINGS

Part No.	Option	Length
JBC303	LIGHT DUTY	2-1/2 INCH
JBC403	MEDIUM DUTY	4 INCH
JBC404	HEAVY DUTY (Pictured)	5 INCH

# STAINLESS STEEL MOUNTS & ACCESSORIES

FORD

## STAINLESS STEEL LEFT SIDE FENDER MOUNT

FITS '97 - '09 FORD F150 TRUCKS & FORD EXPEDITIONS



Part No.	Option
PC22-1701	W/ LUG STUD (Pictured)
PC22-1703	TERM. CABLE KIT

FORD

## STAINLESS STEEL LEFT SIDE FENDER MOUNT

FITS '97 - '09 FORD F250/F350 TRUCKS



Part No.	Option
PC22-1801	W/ LUG STUD (Pictured)
PC22-1803	TERM. CABLE KIT

FORD

## STAINLESS STEEL LEFT SIDE FENDER MOUNT

FITS '11 FORD F250 TRUCKS • FITS '11 - '12 FORD F350 TRUCKS



Part No.	Option
PC22-2501	W/ LUG STUD (Pictured)
PC22-2502	W/ SS SO239
PC22-2503	TERM. CABLE KIT

FORD

## STAINLESS STEEL LEFT SIDE FENDER MOUNT

FITS '10 - '11 FORD F150/F250 TRUCKS • FITS '08 - '10 FORD F350 TRUCKS • FITS '11 FORD ESCAPE



Part No.	Option
PC22-2601	W/ LUG STUD (Pictured)
PC22-2603	TERM. CABLE KIT

FORD

## STAINLESS STEEL FORD F150 HOOD GROOVE MOUNT

FITS '15 AND UP FORD F150 TRUCKS



Part No.	Option
PC22-4000	MOUNT ONLY (Pictured)
PC22-4001	W/LUG STUD
PC22-4003	TERM. CABLE KIT

FORD

## STAINLESS STEEL FORD F250 - F550 HOOD GROOVE MOUNT

FITS '17 AND UP FORD F250, F350, F450 & F550 TRUCKS



Part No.	Option
PC22-4100	MOUNT ONLY (Pictured)
PC22-4101	W/LUG STUD
PC22-4103	TERM. CABLE KIT (Pictured)

TOYOTA

## STAINLESS STEEL LEFT SIDE FENDER MOUNT

FITS '07 & UP TOYOTA TUNDRA, SEQUOIA & 4 RUNNER • FITS '11 TOYOTA RAV 4



Part No.	Option
PC42-2901	W/ LUG STUD (Pictured)
PC42-2903	TERM. CABLE KIT

TOYOTA

## STAINLESS STEEL LEFT SIDE FENDER MOUNT

FITS '93 - '98 TOYOTA T100 TRUCKS



Part No.	Option
PC42-2201	W/ LUG STUD (Pictured)
PC42-2202	W/ SS SO239
PC42-2203	TERM. CABLE KIT

# STAINLESS STEEL MOUNTS & ACCESSORIES

CHEVY/GMC

## STAINLESS STEEL LEFT SIDE FENDER MOUNT

FITS '99 - '01 FULL SIZE CHEVY/GMC TRUCKS • FITS '05 - '06 TOYOTA TUNDRA TRUCKS



Part No.	Option
PC12-1401	W/ LUG STUD (Pictured)
PC12-1403	TERM. CABLE KIT

CHEVY/GMC

## STAINLESS STEEL LEFT SIDE FENDER MOUNT

FITS '01 - '07 CHEVY SILVERADO TRUCKS, AVALANCHE & SUBURBAN



Part No.	Option
PC12-1901	W/ LUG STUD (Pictured)
PC12-1903	TERM. CABLE KIT

CHEVY/GMC

## STAINLESS STEEL SHORT FENDER GROOVE MOUNT

COMPATIBLE WITH 2007-2010 CHEVY SILVERADO & COMPACT VEHICLES



Part No.	Option
PC12-1101	W/ LUG STUD (Pictured)
PC12-1102	W/ SS SO239
PC12-1103	TERM. CABLE KIT

CHEVY/GMC

## STAINLESS STEEL LEFT SIDE FENDER MOUNT

FITS '10 & UP CHEVY TRUCKS, AVALANCHE, SUBURBAN & TAHOE • FITS '10 & UP TOYOTA TACOMA



Part No.	Option
PC12-2701	W/ LUG STUD (Pictured)
PC12-2703	TERM. CABLE KIT

DODGE

## STAINLESS STEEL MOUNT

FITS '04 - '08 FULL SIZE DODGE TRUCKS



Part No.	Option
PC32-1501	W/ LUG STUD (Pictured)
PC32-1503	TERM. CABLE KIT

DODGE

## STAINLESS STEEL MOUNT

FITS '94 - '03 FULL SIZE DODGE TRUCKS



Part No.	Option
PC32-1601	W/ LUG STUD (Pictured)
PC32-1603	TERM. CABLE KIT

DODGE

## STAINLESS STEEL MOUNT

FITS 2009 & UP DODGE TRUCKS



Part No.	Option
PC32-3100	MOUNT ONLY (Pictured)
PC32-3101	W/ LUG STUD
PC32-3103	TERM. CABLE KIT

JEEP

## STAINLESS STEEL FENDER MOUNT

FITS '07 & UP JEEP WRANGLERS



Part No.	Option
PC32-2801	W/ LUG STUD (Pictured)
PC32-2803	TERM. CABLE KIT

# STAINLESS STEEL MOUNTS & ACCESSORIES

## VANS

### STAINLESS STEEL LEFT SIDE FENDER MOUNT FOR MOST VANS



Part No.	Option
PC02-1301	W/ LUG STUD (Pictured)
PC02-1302	W/ SS SO239
PC02-1303	TERM. CABLE KIT

## UNIVERSAL

### STAINLESS STEEL TALL FENDER GROOVE MOUNT FOR FULL SIZE VEHICLES



Part No.	Option
PC02-1001	W/ LUG STUD (Pictured)
PC02-1002	W/ SS SO239
PC02-1003	TERM. CABLE KIT

## UNIVERSAL

### STAINLESS STEEL FLAT MOUNT

LENGTH 3-1/2"



Part No.	Option
PC02-2001	W/ LUG STUD (Pictured)
PC02-2002	W/ SS SO239
PC02-2003	TERM. CABLE KIT

## UNIVERSAL

### STAINLESS STEEL LONG FLAT MOUNT

LENGTH 5-1/2"



Part No.	Option
PC02-2101	W/ LUG STUD (Pictured)
PC02-2102	W/ SS SO239
PC02-2103	TERM. CABLE KIT

## UNIVERSAL

### STAINLESS STEEL 90° MOUNT



Part No.	Option
PC02-2301	W/ LUG STUD (Pictured)
PC02-2302	W/ SS SO239
PC02-2303	TERM. CABLE KIT

## UNIVERSAL

### STAINLESS STEEL ANGLED SIDE OR FENDER MOUNT



Part No.	Option
PC02-2401	W/ LUG STUD (Pictured)
PC02-2402	W/ SS SO239
PC02-2403	TERM. CABLE KIT

## UNIVERSAL

### STANDARD STAINLESS STEEL 3- WAY MIRROR MOUNT

1/2" STUD MOUNTING HOLE • GRIPPER  
TABS IN BRACKET FOR SECURE  
MOUNTING



Part No.	Option
JBC991SS	MOUNT ONLY
JBC995SS	W/SO239 (Pictured)
JBC991SS-03	TERM. CABLE KIT

## UNIVERSAL

### HEAVY-DUTY STAINLESS STEEL 3- WAY MIRROR MOUNT

5/8" STUD MOUNTING HOLE • GRIPPER  
TABS IN BRACKET FOR SECURE  
MOUNTING



Part No.	Option
VO991SSL	MOUNT ONLY (Pictured)
VO993SSL	BEEHIVE STUD

# STAINLESS STEEL MOUNTS & ACCESSORIES

## UNIVERSAL

### STAINLESS STEEL TRAILER HITCH MOUNT



Part No.	Option
SSTH20	MOUNT ONLY
SSTH25	W/ SS SO239 (Pictured)
SSTH30	TERM. CABLE KIT

### STAINLESS STEEL DOUBLE HEX LUG STUD

STAINLESS STEEL LUG STUD WITH  
TERMINAL



Part No.	Option
JBC900SS	

### STAINLESS STEEL DOUBLE HEX SO239 STUD

STAINLESS STEEL SO239 STUD



Part No.	Option
JBC910HSS	

### STAINLESS STEEL DOME SO239 STUD

STAINLESS STEEL DOME SO239 STUD



Part No.	Option
JBC930SS	

### STAINLESS STEEL MOUNTING BARS

COMPATIBLE WITH MOST TRUCKS  
INCLUDING FREIGHTLINER & VOLVO



Part No.	Option
SPM50	M6 THREAD - 6" LONG
SSR50	M8 THREAD - 4-1/2" LONG (Pictured)
SSR50C	M8 THREAD - 6-1/2" LONG

### STAINLESS STEEL SHAFTS - 3/8- 24 THREAD & HEX NUTS



Part No.	Option
SS375-8N	8" LONG
SS375-10N	10" LONG
SS375-12N	12" LONG
SS375-16N	16" LONG
SS375-18N	18" LONG
SS375-22N	22" LONG (Pictured)
SS375-36N	36" LONG
SS375-44N	44" LONG

# MICROPHONES & SPEAKERS

## PREMIUM SERIES MICROPHONES

- High sensitivity microphone cartridge • Ergonomic hand contour design • Blue LED operation indicator • Textured ABS plastic housing and thumb lever • Contoured black mesh microphone grill • 9' Heavy duty military spec microphone cord with strain relief • High quality chrome plated 4 or 5 pin microphone connector • Hand assembled and tested



Part No.	Option
PSM4	DYNAMIC - 4 PIN
PSM4NC	NOISE CANCELING - 4 PIN
PSM4PM	POWER MIC - 4 PIN
PSM5	DYNAMIC - 5 PIN
PSM5PM	POWER MIC - 5 PIN

## PREMIUM SERIES SPEAKERS

### PRESIDENTIAL



- 4" - 8 Ohm external speaker • 10 Watt rated • 10' cord with 3.5mm plug • Swivel mounting bracket and hardware included

Part No.	Option
JBCSP-1	DYNAMIC

## PREMIUM SERIES SPEAKERS

### NOISE CANCELING



- 4" - 8 Ohm external speaker • Noise cancelation adjustment • 10 Watt rated • 10' cord with 3.5mm plug • Swivel mounting bracket and hardware included

Part No.	Option
JBCSP-2	NOISE CANCELING

## PREMIUM SERIES SPEAKERS

### TALK BACK



- 4" - 8 Ohm external speaker • P.A. Talk back and noise cancelation • 10 Watt rated • 10' cord with 3.5mm plug • Swivel mounting bracket and hardware included

Part No.	Option
JBCSP-3	TALK BACK

## PREMIUM SERIES SPEAKERS

### MINI SPEAKER



- 2-1/4" - 8 Ohm external speaker • 5 Watt rated • 6' cord with 3.5mm plug • Swivel mounting bracket and hardware included

Part No.	Option
JBCSP-5	MINI

## PREMIUM SERIES SPEAKERS

### MINI WEDGE SPEAKER



- 2-1/4" - 8 Ohm external speaker • Attractive wedge style • 5 Watt rated • 6' cord with 3.5mm plug • Swivel mounting bracket and hardware included

Part No.	Option
JBCSP-8	WEDGE

## PREMIUM SERIES SPEAKERS

### PA SPEAKER



- 5" Marine style white ABS horn • 15 Watt rated • Indoor/outdoor weatherproof • 10' cord with 3.5mm plug • Mounting bracket and hardware included • Available in black (B) or white (W)

Part No.	Option
JBCPA-5B	BLACK
JBCPA-5W	WHITE

# RADIO ACCESSORIES

## INVERSE MULTIPLEXOR SYSTEM CB TO AM/FM



Allows your CB antenna to simultaneously work as an AM/FM antenna • No tuning necessary • 30 Watt maximum input power rating • Works with standard CB antennas • Not recommended for use with no-ground antennas

Part No.	Option
IM-AF	

## INVERSE MULTIPLEXOR SYSTEM AM/FM TO CB



Allows your AM/FM antenna to simultaneously work as a CB antenna • Adjustable capacitor for precise SWR tuning • 30 Watt maximum input power rating • Works with all AM/FM antennas

Part No.	Option
IM-CB	

## UNIVERSAL DC POWER LINE FILTER



Installs between your CB radio or car stereo and DC power supply to filter out line noise & reduce electrical interference • 0-20 v DC @ 15A continuous – 20A peak • Bi-directional filter - works in either direction • Color coded jacks for simplicity

Part No.	Option
PLF1520	

## SWR METERS



SWR meter used for calibrating a CB antenna • Impedance: 52 ohms • SWR: 1:1-1:3 • Accuracy: +5% • Frequency Range: 26-30MHz • SO-239 UHF Type Connectors • 100 Watts maximum power

Part No.	Option
PC-SWR3	

## NOISE CLIPPER



Reduces EMI noise (Electromagnetic interference) • Improves the dynamic range of CB and amateur radio • Simple to use - no power required

Part No.	Option
JBCNR400	

## MAGNETIC MIC HOLDER



Part No.	Option
JBCMH1	

## 3 FINGER MIC HOLDER



Part No.	Option
JBCMH2	

## HEAVY-DUTY METAL MIC HOLDER



Part No.	Option
JBCMH2HD	

## PLASTIC ADHESIVE MIC HOLDER



Part No.	Option
JBCMH3	BLACK

## MICROPHONE BUDDY HOOKS

Available in plastic or metal



Part No.	Option
JBCMH4	BLACK PLASTIC
JBCMH5	METAL

# RADIO ACCESSORIES

## HOOK-N-LOOP ADHESIVE PADS



Part No.	Option
VEL-14	1" X 4" STRIP
VEL-25	2" X 5" STRIP

## 3-PIN POWER CORDS



16 Gauge wire • 3 Amp fuse • With or without molded plug

Part No.	Option
JBCPC-3H	HARD WIRED
JBCPC-3PH	LIGHTER PLUG

## LIGHTER PLUGS



10 Amp fuse • With or without 16 gauge 4" leads

Part No.	Option
HD-MCP	
HD-MCP4	W/4" LEADS

## 12 VOLT POWER SOCKETS



16 Gauge wire • 10 Amp fuse • Molded outlet caps

Part No.	Option
CPO1-2CSF	2-WAY
CPO1-3CSF	3-WAY

## STANDARD RADIO BRACKET



Adjustable from 2-1/2" to 8-1/2"

Part No.	Option
JBC1200	

## EXTRA WIDE RADIO BRACKET



Adjustable from 2-3/4" to 9-1/2"

Part No.	Option
JBC1200L	

## QUICK RELEASE RADIO BRACKET



Adjustable from 2-1/2" to 8-1/2"

Part No.	Option
JBC1250	

## UNIVERSAL RADIO HUMP MOUNT



Part No.	Option
JBC1000	

## PLASTIC REPLACEMENT RADIO KNOBS



Part No.	Option
JBC5KNP	5MM
JBC6KNP	6MM

## METAL REPLACEMENT RADIO KNOBS



Part No.	Option
JBC5KN	5MM
JBC6KN	6MM

# CONNECTORS & ADAPTERS

## SOLDER ON PL-259 CONNECTOR



Part No.	Option
PC259	STANDARD
KPL-259	HEAVY DUTY (Pictured)

## PL-259 REDUCER



Part No.	Option
UG-175	FOR RG58
UG-176	FOR RG59/8X (Pictured)

## UHF MALE CRIMP ON CONNECTOR



Part No.	Option
PL-259C	FOR RG58 CABLE (Pictured)
PL259C-59	FOR RG59 CABLE
PL259C-8X	FOR RG8X CABLE

## GOLD PIN PL259 CRIMP ON CONNECTOR



Part No.	Option
PL259C-58G	FOR RG58 (Pictured)
PL259C-59G	FOR RG59
PL259C-8XG	FOR RG8X

## TWIST ON PL259 CONNECTOR



Part No.	Option
PL259-58S	FOR RG58 (Pictured)
PL259-59S	FOR RG59

## UHF FEMALE CRIMP ON CONNECTOR



Part No.	Option
PL-259FC	FOR RG58 CABLE (Pictured)
PL-259FC-59	FOR RG59 CABLE
PL-259-8X	FOR RG8X CABLE

## UHF DOUBLE FEMALE ADAPTER



Part No.	Option
PL-258	FEMALE TO FEMALE (Pictured)
UG-363	3" BULKHEAD

## UHF RIGHT ANGLE ADAPTER - MALE UHF TO FEMALE UHF



Part No.	Option
UG-644	MALE TO FEMALE

## UHF " T " ADAPTERS



Part No.	Option
PL-1713	1 MALE - 2 FEMALE (Pictured)
PL-1714	3 FEMALE

## BNC MALE CRIMP ON CONNECTOR



Part No.	Option
BNC-10	FOR RG58 (Pictured)
BNC-10-59	FOR RG59
BNC-10-8X	FOR RG8X
BNC-174	FOR RG174

## BNC FEMALE CRIMP ON CONNECTOR



Part No.	Option
BNC-15	FOR RG58 (Pictured)
BNC-15-59	FOR RG59
BNC-15-8X	FOR RG8X

## BNC MALE ADAPTER



Part No.	Option
BNC-26	FEMALE MOTOROLA
BNC-44	FEMALE UHF (Pictured)
BNC-51	FEMALE TNC

# CONNECTORS & ADAPTERS

## TNC MALE CRIMP ON CONNECTOR



Part No.	Option
TNC-10	FOR RG58 (Pictured)
TNC-8X	FOR RG8X
TNC-9913C	BELDEN 9913
TNC-174M	FOR RG174

## TNC FEMALE CRIMP ON CONNECTOR



Part No.	Option
TNC-15	FOR RG58 (Pictured)
TNC-174	FOR RG174

## TNC MALE - TNC FEMALE RIGHT ANGLE CONNECTOR



Part No.	Option
TNC-35	MALE TO FEMALE

## TNC "T" CONNECTOR



Part No.	Option
TNC-38	1 MALE - 2 FEMALE

## MINI UHF MALE CRIMP ON CONNECTOR



Part No.	Option
MPL-03	FOR RG58 (Pictured)
MPL-03-59	FOR RG59
MPL-03-8X	FOR RG8X
MPL-174	FOR RG174

## MINI UHF FEMALE CRIMP ON CONNECTOR



Part No.	Option
MPL-01	FOR RG58 (Pictured)
MPL-01-59	FOR RG59

## MINI UHF FEMALE BULKHEAD



Part No.	Option
MPL-04	FRONT MOUNT

## MINI UHF DOUBLE FEMALE



Part No.	Option
MPL-06	FEMALE TO FEMALE

## MINI UHF RIGHT ANGLE ADAPTER



Part No.	Option
MPL-08	MALE TO FEMALE

## MINI UHF MALE ADAPTER



Part No.	Option
MPL-12	TO MINI UHF FEMALE

## MINI UHF FEMALE ADAPTER



Part No.	Option
MPL-16	TO UHF MALE

## FME NIPPLE ADAPTER - MALE TO MALE



Part No.	Option
NIP-9	TO N MALE
NIP-10	TO MINI UHF MALE
NIP-11	TO BNC MALE
NIP-13	TO UHF MALE (Pictured)
NIP-14	TO SMA MALE

# CONNECTORS & ADAPTERS

## FME NIPPLE ADAPTER - MALE TO FEMALE



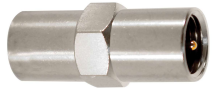
Part No.	Option
NIP-4	TO SMA FEMALE
NIP-5	TO MINI UHF FEMALE (Pictured)

## FME FEMALE ROTATING NIPPLE CRIMP ON CONNECTOR



Part No.	Option
NIP-58	FOR RG58 (Pictured)
NIP-59	FOR RG59
NIP-8X	FOR RG8X
NIP-174	FOR RG174

## FME NIPPLE - MALE SPLICE ADAPTER



Part No.	Option
NIP-3	MALE - MALE SPLICE

## N MALE CRIMP ON CONNECTOR



Part No.	Option
N-11	FOR RG58 (Pictured)
N-112	FOR RG8X
N-11-174	FOR RG174
N-01-9913C	FOR BELDEN 9913

## N MALE ADAPTER



Part No.	Option
N-31	UHF FEMALE (Pictured)
N-33	TNC FEMALE

## SMA MALE CRIMP ON CONNECTOR



Part No.	Option
SMA-19-58	FOR RG58 (Pictured)
SMA-19-8X	FOR RG8X
SMA-19-174	FOR RG174

## SMA FEMALE CRIMP ON CONNECTOR



Part No.	Option
SMA-19F-58	FOR RG58 (Pictured)
SMA-174F	FOR RG174

## SMA MALE ADAPTER



Part No.	Option
SMA-29	BNC FEMALE
SMA-30	TNC MALE
SMA-31	TNC FEMALE
SMA-33	MINI UHF FEMALE

## SMA FEMALE ADAPTER



Part No.	Option
SMA-39	BNC FEMALE
SMA-40	TNC MALE (Pictured)
SMA-41	TNC FEMALE

## MOTOROLA PLUG - MALE



Part No.	Option
31.5713	MALE

## MOTOROLA PLUG - FEMALE



Part No.	Option
31.5717	FEMALE

## ENCAPSULATING WEATHER BOOT



Part No.	Option
SR-29B	BLACK

**Visit Us Online**



**[www.procommproducts.com](http://www.procommproducts.com)**



**THANK YOU FOR  
YOUR BUSINESS**



**PROCOMM, INC.**  
**PO BOX 149**  
**504 N. OAK STREET**  
**ONARGA, IL 60955**  
**[www.procommproducts.com](http://www.procommproducts.com)**

**Quality Products**  
**for Superior Communications**

---

**ISO 9001:2015**  
**Certified**

---