

# ANTENNA MOUNTS

## HEAVY-DUTY BALL MOUNT WITH 3-1/2" BACK MOUNTING PLATE



Heavy duty CB radio antenna ball mount • 3-1/2" Mounting plate • Adjustable mounting angle • Available with lug or UHF connector (SO-239)

Part No.	Option
JBC985-3	LUG CONNECTOR (Pictured)
JBC985-3P	UHF CONNECTOR

## HEAVY-DUTY BALL MOUNT WITH SPRING & 3-1/2" BACK MOUNTING PLATE AND BARREL SPRING



Heavy duty CB antenna ball mount with chrome plated barrel spring • 3-1/2" Mounting plate • Adjustable mounting angle • Available with lug or UHF connector (SO-239)

Part No.	Option
JBC986	LUG CONNECTOR (Pictured)
JBC986P	UHF CONNECTOR

## 3" HEAVY DUTY CHROME PLATED MAGNET MOUNT WITH PL259



3" Chrome plated magnet mount • 3/8-24 Thread fits standard antennas • Available with 12' or 18' of RG58 cable and PL259 connector • Add (/BN) for BNC connector

Part No.	Option
JBC110-12	12' COAX (Pictured)
JBC110-18	18' COAX

## 4" PLASTIC COVERED MAGNET MOUNT WITH PL259



Powerful 4" 8-pole magnet • Plastic cover eliminates rust • 18' Low loss RG58 cable with PL259 connector

Part No.	Option
JBC114	18' COAX W/PL259

## 5" HEAVY DUTY CHROME PLATED MAGNET MOUNT WITH 18' COAX



5" Chrome plated magnet mount • 18' of RG58 cable and PL259 connector • 3/8-24 Thread fits standard antennas

Part No.	Option
JBC115	PL259 CONNECTOR

## HEAVY-DUTY BEEHIVE SURFACE MOUNT WITH STAR WASHER



Part No.	Option
JBC989	SO239 CONNECTOR

# ANTENNA MOUNTS

## HEAVY DUTY FENDER MOUNT KIT



Aluminum fender mount • Chrome plated double hex nut • Uses ProComm's patented Terminator connector • High quality RG58 cable with nipple connector • NIP to UHF adapter included • Accepts standard 3/8-24 thread antennas

Part No.	Option
JBC472C	18' COAX

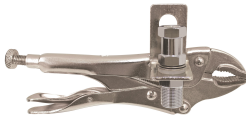
## WEATHERPROOF TRUNK LIP MOUNT WITH PL259 CONNECTOR



Weatherproof trunk lip mount • 18' Coax with PL259 connection • Fits standard 3/8-24 thread antenna

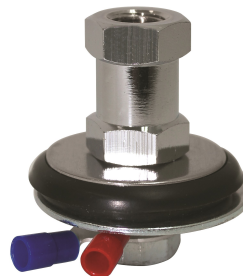
Part No.	Option
JBC105	18' COAX

## QUICK RELEASE VISE GRIP MOUNTS



Part No.	Option
JBC955	W/ HD SO239 (Pictured)
JBC950	W/ LUG STUD
JBC951	MOUNT ONLY

## HEAVY-DUTY SURFACE MOUNT



Part No.	Option
JBC504	LUG TERMINAL

## TERMINATOR SERIES SURFACE MOUNT KIT



Low profile heavy duty surface mount • Dual o-ring waterproof design • Uses ProComm's patented Terminator connector • High quality RG58 cable with nipple connector • NIP to UHF adapter included • Accepts standard 3/8-24 thread antennas

Part No.	Option
TSM-18	18' COAX

## TERMINATOR SERIES RG58 CABLE



ProComm's patented Terminator connector • 18 Feet of high quality RG58 cable with PL-259 (UHF) connector or NIP-13 (FME to UHF) adapter • Chrome plated hex nut accepts standard 3/8-24 thread antennas

Part No.	Option
HS818T-PL	PL259 CONNECTOR
HS818T-NKT	FME TO UHF ADAPTER (Pictured)