

# CONNECTORS & ADAPTERS

## SOLDER ON PL-259 CONNECTOR



Part No.	Option
PC259	STANDARD
KPL-259	HEAVY DUTY (Pictured)

## PL-259 REDUCER



Part No.	Option
UG-175	FOR RG58
UG-176	FOR RG59/8X (Pictured)

## UHF MALE CRIMP ON CONNECTOR



Part No.	Option
PL-259C	FOR RG58 CABLE (Pictured)
PL259C-59	FOR RG59 CABLE
PL259C-8X	FOR RG8X CABLE

## GOLD PIN PL259 CRIMP ON CONNECTOR



Part No.	Option
PL259C-58G	FOR RG58 (Pictured)
PL259C-59G	FOR RG59
PL259C-8XG	FOR RG8X

## TWIST ON PL259 CONNECTOR



Part No.	Option
PL259-58S	FOR RG58 (Pictured)
PL259-59S	FOR RG59

## UHF FEMALE CRIMP ON CONNECTOR



Part No.	Option
PL-259FC	FOR RG58 CABLE (Pictured)
PL-259FC-59	FOR RG59 CABLE
PL-259-8X	FOR RG8X CABLE

## UHF DOUBLE FEMALE ADAPTER



Part No.	Option
PL-258	FEMALE TO FEMALE (Pictured)
UG-363	3" BULKHEAD

## UHF RIGHT ANGLE ADAPTER - MALE UHF TO FEMALE UHF



Part No.	Option
UG-644	MALE TO FEMALE

## UHF " T " ADAPTERS



Part No.	Option
PL-1713	1 MALE - 2 FEMALE (Pictured)
PL-1714	3 FEMALE

## BNC MALE CRIMP ON CONNECTOR



Part No.	Option
BNC-10	FOR RG58 (Pictured)
BNC-10-59	FOR RG59
BNC-10-8X	FOR RG8X
BNC-174	FOR RG174

## BNC FEMALE CRIMP ON CONNECTOR



Part No.	Option
BNC-15	FOR RG58 (Pictured)
BNC-15-59	FOR RG59
BNC-15-8X	FOR RG8X

## BNC MALE ADAPTER



Part No.	Option
BNC-26	FEMALE MOTOROLA
BNC-44	FEMALE UHF (Pictured)
BNC-51	FEMALE TNC

# CONNECTORS & ADAPTERS

## TNC MALE CRIMP ON CONNECTOR



Part No.	Option
TNC-10	FOR RG58 (Pictured)
TNC-8X	FOR RG8X
TNC-9913C	BELDEN 9913
TNC-174M	FOR RG174

## TNC FEMALE CRIMP ON CONNECTOR



Part No.	Option
TNC-15	FOR RG58 (Pictured)
TNC-174	FOR RG174

## TNC MALE - TNC FEMALE RIGHT ANGLE CONNECTOR



Part No.	Option
TNC-35	MALE TO FEMALE

## TNC "T" CONNECTOR



Part No.	Option
TNC-38	1 MALE - 2 FEMALE

## MINI UHF MALE CRIMP ON CONNECTOR



Part No.	Option
MPL-03	FOR RG58 (Pictured)
MPL-03-59	FOR RG59
MPL-03-8X	FOR RG8X
MPL-174	FOR RG174

## MINI UHF FEMALE CRIMP ON CONNECTOR



Part No.	Option
MPL-01	FOR RG58 (Pictured)
MPL-01-59	FOR RG59

## MINI UHF FEMALE BULKHEAD



Part No.	Option
MPL-04	FRONT MOUNT

## MINI UHF DOUBLE FEMALE



Part No.	Option
MPL-06	FEMALE TO FEMALE

## MINI UHF RIGHT ANGLE ADAPTER



Part No.	Option
MPL-08	MALE TO FEMALE

## MINI UHF MALE ADAPTER



Part No.	Option
MPL-12	TO MINI UHF FEMALE

## MINI UHF FEMALE ADAPTER



Part No.	Option
MPL-16	TO UHF MALE

## FME NIPPLE ADAPTER - MALE TO MALE



Part No.	Option
NIP-9	TO N MALE
NIP-10	TO MINI UHF MALE
NIP-11	TO BNC MALE
NIP-13	TO UHF MALE (Pictured)
NIP-14	TO SMA MALE

# CONNECTORS & ADAPTERS

## FME NIPPLE ADAPTER - MALE TO FEMALE



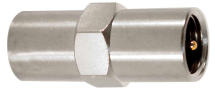
Part No.	Option
NIP-4	TO SMA FEMALE
NIP-5	TO MINI UHF FEMALE (Pictured)

## FME FEMALE ROTATING NIPPLE CRIMP ON CONNECTOR



Part No.	Option
NIP-58	FOR RG58 (Pictured)
NIP-59	FOR RG59
NIP-8X	FOR RG8X
NIP-174	FOR RG174

## FME NIPPLE - MALE SPLICE ADAPTER



Part No.	Option
NIP-3	MALE - MALE SPLICE

## N MALE CRIMP ON CONNECTOR



Part No.	Option
N-11	FOR RG58 (Pictured)
N-112	FOR RG8X
N-11-174	FOR RG174
N-01-9913C	FOR BELDEN 9913

## N MALE ADAPTER



Part No.	Option
N-31	UHF FEMALE (Pictured)
N-33	TNC FEMALE

## SMA MALE CRIMP ON CONNECTOR



Part No.	Option
SMA-19-58	FOR RG58 (Pictured)
SMA-19-8X	FOR RG8X
SMA-19-174	FOR RG174

## SMA FEMALE CRIMP ON CONNECTOR



Part No.	Option
SMA-19F-58	FOR RG58 (Pictured)
SMA-174F	FOR RG174

## SMA MALE ADAPTER



Part No.	Option
SMA-29	BNC FEMALE
SMA-30	TNC MALE
SMA-31	TNC FEMALE
SMA-33	MINI UHF FEMALE

## SMA FEMALE ADAPTER



Part No.	Option
SMA-39	BNC FEMALE
SMA-40	TNC MALE (Pictured)
SMA-41	TNC FEMALE

## MOTOROLA PLUG - MALE



Part No.	Option
31.5713	MALE

## MOTOROLA PLUG - FEMALE



Part No.	Option
31.5717	FEMALE

## ENCAPSULATING WEATHER BOOT



Part No.	Option
SR-29B	BLACK